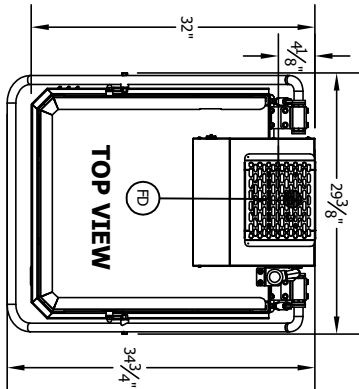
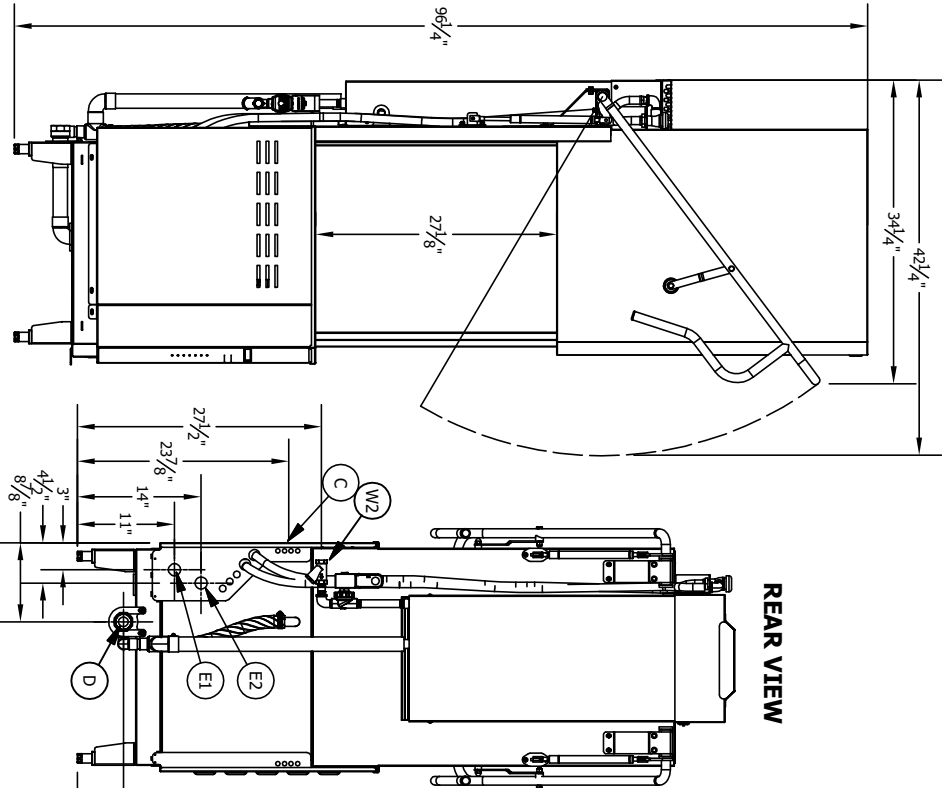


INSTALLATION CONNECTIONS

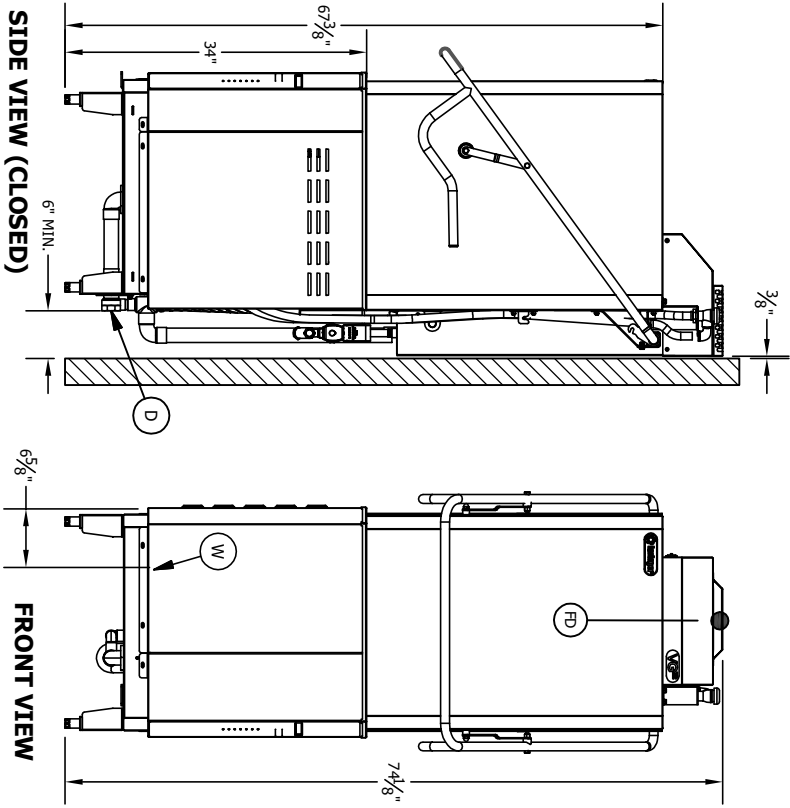
Description	Note
D DRAIN CONNECTION	1-1/2 F-NPT
W HOT WATER INLET (110° F MIN.)	1/2 F-NPT
E1 MAIN ELECTRICAL (SINGLE & 2-POINT)	1-3/8 HOLE
E2 BOOSTER ELECTRICAL (2 PT ONLY)	1-3/8 HOLE
C CHEMICAL LINE & SIGNAL ACCESS	1/2 HOLES (4)
FD FAN DISCHARGE (VG ONLY)	6" CLEARANCE
W2 COLD WATER INLET (75° F MAX.)	1/2 F-NPT



SIDE VIEW (OPEN)



REAR VIEW



SIDE VIEW (CLOSED)

FRONT VIEW



MODEL:

CX20 HH VG

FEET ARE ADJUSTABLE ± 0.5 IN
REFER TO SPEC SHEET FOR ALL UTILITY REQUIREMENTS
PLEASE CONTACT FACTORY FOR TECHNICAL QUESTIONS

UNLESS OTHERWISE SPECIFIED, DIMENSIONS ARE IN INCHES
XX XXX FRACTIONS ANGLES
 $\pm .02$ $\pm .005$ $\pm 1/32$ $\pm 1/2$
THE INFORMATION ON THIS DRAWING IS THE
PROPERTY OF INSINGER MACHINE COMPANY AND MAY NOT BE DISCLOSED TO ANY
OTHER PARTY WITHOUT THE WRITTEN CONSENT
OF INSINGER MACHINE COMPANY. THIS
DRAWING IS NOT TO BE USED FOR THE
CONSTRUCTION OF A SIMILAR OR IDENTICAL
PART OR COMPONENT OR SYSTEM
WITHOUT THE WRITTEN CONSENT OF
INSINGER MACHINE COMPANY. ANY
VIOLATION OF THE PROPRIETARY RIGHTS OF
INSINGER MACHINE COMPANY SHALL BE
CONSIDERED A VIOLATION OF THE
PATENT RIGHTS OF INSINGER MACHINE
COMPANY AND SHALL BE SUBJECT TO
LAWYER'S FEES AND COSTS AND
PUNY RESPONSIBLE TO APPROPRIATE LEGAL ACTION.

INSINGER MACHINE CO. 6426 STATE ROAD PHILADELPHIA, PA 19135	DRAWN BY: JTB DATE: 01/30/25 SCALE: 1:1	DESCRIPTION: High Temperature Door Type Electrically Heated Dishwashing Machine With VSDI Guard Option	REV: A
PHONE: (215) 624-4800	REVISION DATE: 01/30/25	DWG NUMBER: 1000-10112	SHEET 1 OF 1