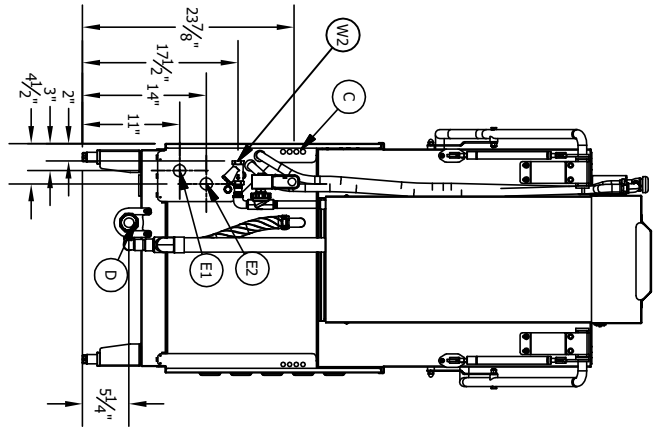
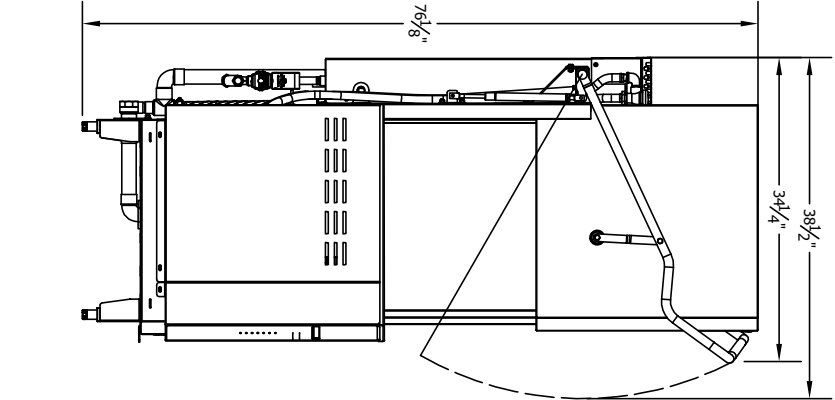
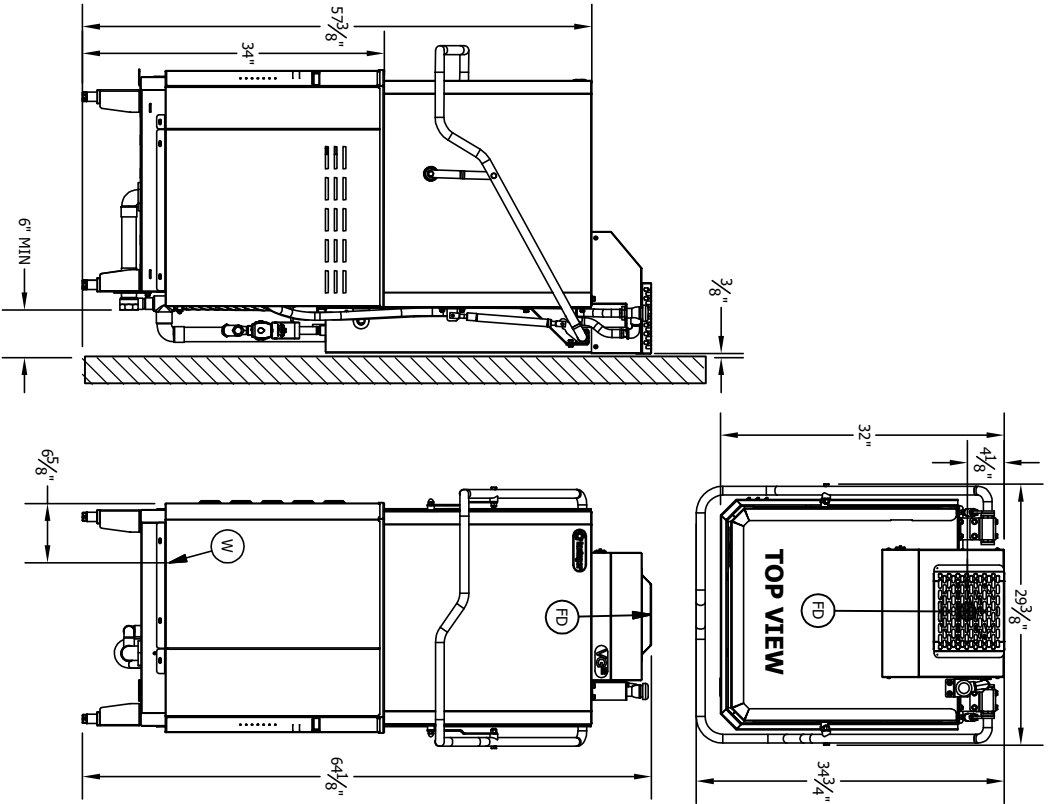


INSTALLATION CONNECTIONS		
Description	Note	
D DRAIN CONNECTION	1-1/2 F-NPT	
W HOT WATER INLET (110° F MIN.)	1/2 F-NPT	
E1 MAIN ELECTRICAL (SINGLE & 2-POINT)	1-3/8 HOLE	
E2 BOOSTER ELECTRICAL (2 PT ONLY)	1-3/8 HOLE	
C CHEMICAL LINE & SIGNAL ACCESS	1/2 HOLES (4)	
FD FAN DISCHARGE (VG ONLY)	6" CLEARANCE	
W2 COLD WATER INLET (75° F MAX.)	1/2 F-NPT	



SIDE VIEW (CLOSED)

FRONT VIEW

SIDE VIEW (OPEN)

REAR VIEW

FEET ARE ADJUSTABLE ±0.5 IN
REFER TO SPEC SHEET FOR ALL UTILITY REQUIREMENTS
PLEASE CONTACT FACTORY FOR TECHNICAL QUESTIONS

UNLESS OTHERWISE SPECIFIED, DIMENSIONS ARE IN INCHES

TOLERANCES

XX .XXX FRACTIONS ANGLES

±.02 ±.005 ±1/32 ±1/2

INSINGER MACHINE CO.

645 STATE ROAD

PHILADELPHIA, PA. 19135

PHONE: (215) 624-4800

DESCRIPTION: High Temperature Door Type

Electrically Heated

Derusting Machine

WITH VAPOR GUARD OPTION

MODEL: CX20 VG

REV: A

DWG NUMBER: 1000-10113

REVISION DATE: 01/30/25

SHEET 1 OF 1