

## HOW TO OPERATE YOUR UNDERCOUNTER DISHWASHER

### STEP 1



Press the on/off button once to power on.



The word *FIL* will scroll across the display during the filling and heating process. When complete, the wash tank temperature will be displayed on the screen.

### STEP 2



Open the door. Place soiled items onto the dish rack and slide into the machine. Close the door.

### STEP 3



Select from one of the 3 cycles. Press button #1 cycle for standard cycle, button #2 for extended cycle or button #3 for glasses.

When complete, the word *End* will be displayed and the unit will beep.

## HOW TO DRAIN, TAKE APART AND CLEAN YOUR UNDERCOUNTER DISHWASHER

### STEP 1

#### Disassemble



Open the door and remove the dishrack.



Remove the strainer screen.



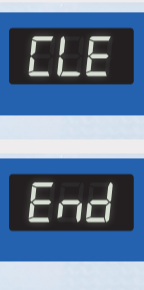
Remove the overflow tube.

### STEP 2

#### Drain



Close the door and press the drain cycle button once.



The Clean message *CLE* will be displayed throughout the drain cycle (which runs for approximately 3 minutes).

The word *End* will be displayed when the cycle is over and the machine will beep. You can now open the door and press the off button.

### STEP 3

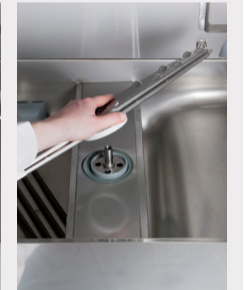
#### Disassemble



Turn the pump filter counter clockwise and remove from tank.



Unscrew the lower rinse arm. Lift out the lower wash arm. Remove both parts and clean.



### STEP 4

#### Disassemble



Unscrew the upper rinse arm. Pull out the wash arm. Remove both parts and clean.



### STEP 5

#### Disassemble



Remove center wash arm support and clean.



Remove front support (located beneath the bottom edge of the door) and clean.



Turn the ring gasket on the center post counter clockwise to remove and clean.



Clean out any residue left in the tank.

### STEP 6

#### Inspect All Parts



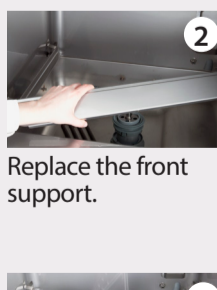
Ensure all removable parts are clean. You are now ready to reassemble.

### STEP 7

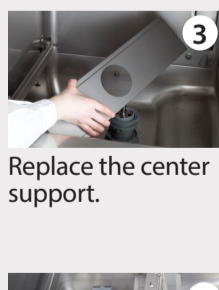
#### Reassemble



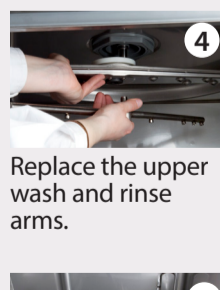
1 Replace ring gasket and turn clockwise to lock into position.



2 Replace the front support.



3 Replace the center support.



4 Replace the upper wash and rinse arms.



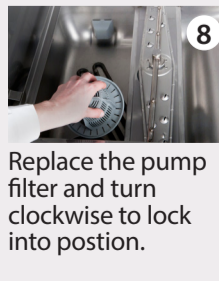
5 Gently tighten the upper rinse arm.



6 Replace the lower wash and rinse arms.



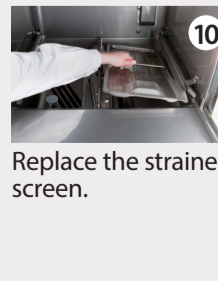
7 Gently tighten the lower rinse arm.



8 Replace the pump filter and turn clockwise to lock into position.



9 Replace the overflow tube.



10 Replace the strainer screen.



Now the unit is clean and ready to operate.