



TRAY DRYER

Technical Manual

TD-321



TECHNICAL MANUAL
including Installation, Operation, and Maintenance Instructions
FOR
TRAYDRYERS
MODEL: TD 321-3



Thank you for Purchasing this quality Insinger product.

On the space provided please record the Model, Serial Number and Start-up date of this unit:

Model: _____

Serial Number: _____

Start-up Date: _____

When referring to this equipment please have this information available.

Each piece of equipment at Insinger is carefully tested before shipment for proper operation. If the need for service should arise please contact your local Authorized Insinger Service Company. A Service Network Listing is provided within this manual. Check this list for your local authorized servicer.

For proper activation of the *Insinger Limited Warranty* a SureFire™ Start-up should be completed on your machine. Refer to the Introduction section in this manual for an explanation of Insinger's SureFire™ Start-up and Check-out Program.

Please read the Insinger Limited Warranty and all installation and operation instructions carefully before attempting to install or operate your new Insinger product.

To register your machine for warranty by phone, fax, or the internet or for answers to questions concerning installation, operation, or service contact our Technical Services Department:

Toll-Free	800.344.4802
Fax	215.624.6966
Email	service@insingermachine.com
World-Wide Web	http://www.insingermachine.com

Thank you.
Insinger



PART 1
TECHNICAL INFORMATION

TRAYDRYER
MODEL: TD 321-3
Table of Contents

Part 1 - Technical Information

- * Introduction
- * Catalogue Cut-sheet and Installation Drawing
- * Warranty

Part 2 - Installation and Operation Instructions

- * Section A, Installation Instructions
- * Section B, Operation and Cleaning Instructions

Part 3 - Maintenance and Repair Procedures

- * Section A, Maintenance and Repair Procedures
- * Section B, Basic Service Guide

Part 4 - Electrical Schematics and Replacement Parts

- * Machine Wiring Diagrams
- * Control Panel Layout and Component Drawing

Part 5 - Replacement Parts

- * Overall Assembly Drawing for TD321-3
- * Blower & Hose Assembly
- * Drive & Chain Assembly
- * Drive Assembly
- * Follower Shaft Assembly
- * Chain Assembly
- * Hook-up Kit
- * Guide Rail Assembly
- * Guide Rail Installation



Thank you for Purchasing this quality Insinger product.

On the space provided please record the Model and Serial Number of this unit:

Model: _____

Serial Number: _____

When referring to this equipment please have these numbers available.

Each piece of equipment at Insinger is carefully tested before shipment for proper operation. If the need for service should arise please contact your local Authorized Insinger Service Company. If you do not know the name of your Authorized Service Company please contact our Technical Services Department toll-free, 800/344-4802.

For proper activation of the *Insinger Limited Warranty* the **Warranty Registration Card** provided with your unit must be returned within 30 days of the installation date.

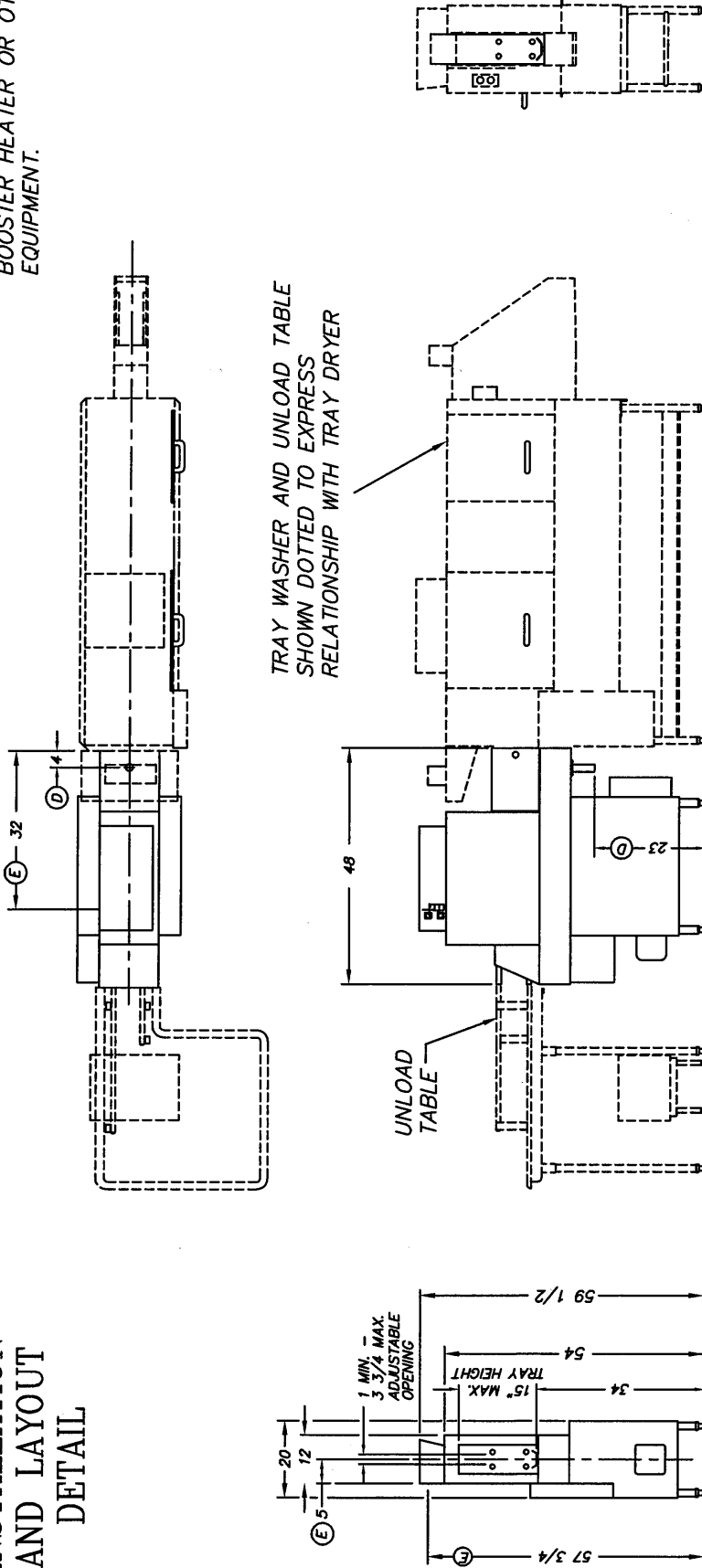
Please read the Insinger Limited Warranty and all installation and operation instructions carefully before attempting to install or operate your new Insinger product.

Thank you.

Insinger Machine Company

INSTALLATION AND LAYOUT DETAIL

NOTE:
INSTALLATION ON EXISTING UNITS
MAY REQUIRE RELOCATION OF
BOOSTER HEATER OR OTHER
EQUIPMENT.



TRAY DRYER
UNLOAD END SHOWN

RIGHT TO LEFT FEED

NOTE: HOOK UP KIT FOR CONNECTION TO INSINGER
TRAY WASHER AVAILABLE, DWG. # 1361-105.

Information and Specifications
Subject to Change Without Notice.

ELECTRICAL CHARACTERISTICS	
VOLTAGE	AMPS
208	31
230	28.2
460	14.1
380	17
CUSTOMER FUSE	
FRN-R-60	
FRN-R-60	
FRS-R-30	
FRS-R-35	

INSTALLATION CONNECTIONS	
LTR	DESCRIPTION
E	ELECT. SERVICE - BLOWER MTR.
D	DRAIN
	1 1/2 O.D. TUBE
	TO HP
	SIZE

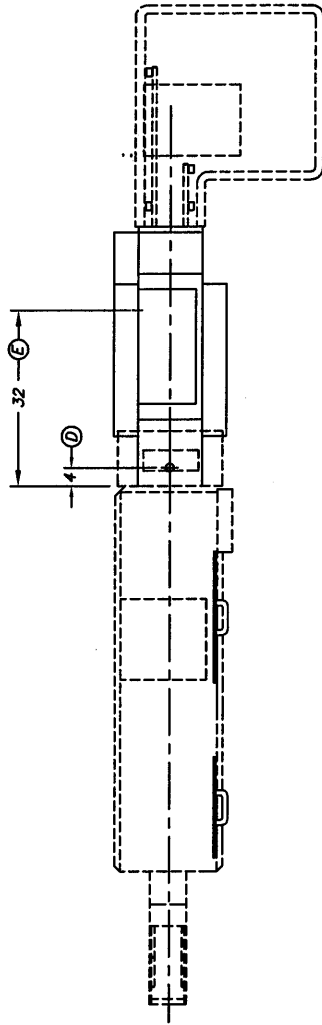
THE INFORMATION ON THIS DRAWING IS THE PROPRIETARY PROPERTY OF INSINGER AND IS NOT TO BE REPRODUCED OR TRANSMITTED IN ANY FORM OR BY ANY MEANS, ELECTRONIC OR MECHANICAL, INCLUDING PHOTOCOPYING, RECORDING, OR BY ANY INFORMATION STORAGE AND RETRIEVAL SYSTEM. THE COMPANY SHALL BE SUBJECT TO APPLICABLE LEGAL ACTION.

TD 321-3 TRAY DRYER
SINGLE TANK CONVEYOR TYPE DISHWASHING MACHINE
Philadelphia, PA 19135
Insinger
FAX (215) 624-4800
DRWN: EMM 01.17.00 SCALE 1/2" = 1'
REV: PI 04.10.07
FILE: STD \TD321-3R

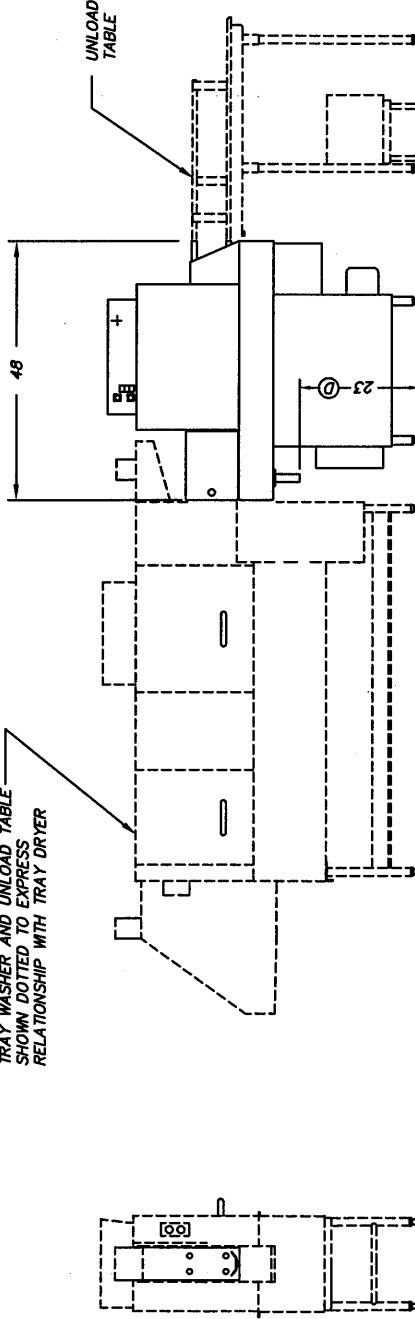
REV	DWG. NO.
F	TD321-3R

NOTE:

INSTALLATION ON EXISTING UNITS
MAY REQUIRE RELOCATION OF
BOOSTER HEATER OR OTHER
EQUIPMENT.



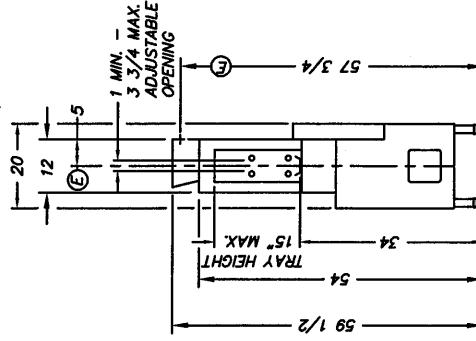
TRAY WASHER AND UNLOAD TABLE
SHOWN DOTTED TO EXPRESS
RELATIONSHIP WITH TRAY DRYER



LEFT TO RIGHT FEED

TRAY DRYER
UNLOAD END SHOWN

INSTALLATION
AND LAYOUT
DETAIL



NOTE: HOOK UP KIT FOR CONNECTION TO INSINGER
TRAY WASHER AVAILABLE. DWG. # 1361-105.

Information and Specifications
Subject to Change Without Notice.

ELECTRICAL CHARACTERISTICS	
VOLTAGE	AMPS
208	31
230	28.2
460	14.1
380	17

THE INFORMATION ON THIS DRAWING IS THE PROPRIETARY PROPERTY OF INSINGER. IT IS TO BE USED ONLY FOR THE PARTS LISTED HEREIN. NO PARTS OR INFORMATION IS TO BE DISCLOSED TO ANY OTHER PARTY WITHOUT THE WRITTEN CONSENT OF INSINGER. THE COMPANY OF THIS MANUFACTURING OF A SIMILAR OR IDENTICAL PART, COMPONENT OR ASSEMBLY SHALL BE THE RESPONSIBILITY OF THE MANUFACTURER. THE PARTS LIST SHALL BE SUBJECT TO CHANGE WITHOUT NOTICE. APPROPRIATE LEGAL ACTION.

TD 321-3 TRAY DRYER		Philadelphia, PA 19135	
SINGLE TANK CONVEYOR TYPE DISHWASHING MACHINE		(215) 824-4800	
Insinger		FAX (215) 824-6986	
DRWN. EMM	01.17.00	SCALE	DWG. NO.
REV: PI	04.10.07	1/2" = 1'	TD321-3L
FILE: STD\TD321-3L			REV F

INSTALLATION CONNECTIONS	
LTR	DESCRIPTION
E	ELECTRICAL CONNECTION
D	DRAIN
	SIZE
	10 HP
	1 1/2 O.D. TUBE



PART 2
INSTALLATION and OPERATION
INSTRUCTIONS

TD 321-3
INSTALLATION INSTRUCTIONS
Section A

A.1 PLACEMENT

- A.1.1 Carefully uncrate machine. Take caution to not damage components which may be mounted on the top or sides of the machine.
- A.1.2 Set unit in place and adjust the feet to level the machine.

Step A.1.3 is for traydryers being retrofitted onto an existing traywasher:

- A.1.3 A significant amount of re-work must be done to install the traydryer at an existing installation.
 - A.1.3.1 Remove the booster and all piping associated with the booster. Remove the unload table from the end of the traywasher.
 - A.1.3.2 Place the traydryer at the end of the traywasher. Connect the two machines together with the bolts provided.
 - A.1.3.3 Re-connect the booster, piping, and unload table.

For installation of a new traywasher and traydryer refer to the installation instructions in the traywasher manual.

A.2 ELECTRICAL CONNECTIONS

- A.2.1 Connect electrical lines sized for the correct voltage, current and phase of the machine. These should agree with machine requirements indicated on the nameplate and labels in control panel.
- A.2.2 A single-point electrical connection is provided for the control circuit and motors.

Electrical connections must be made to a circuit breaker or fused disconnect as provided by the end-user and required by local codes. A wiring diagram is laminated inside the control panel.

IMPORTANT: As with any 3 phase system, an electrician should check all motors for proper phasing, i.e., motors must be running in direction indicated by arrow on housing.

A.4 HVAC

- A.4.1 Ventilation connections are provided on the traywasher.

A.6 Tabling

- A.6.1 Unload tables should be pitched towards the machine to return excess water into the machine.

TD 321-3
OPERATION and CLEANING INSTRUCTIONS
Section B

Insinger dishmachines are user-friendly, making them the easiest dishwashers on the market to operate and maintain.

By following the operation procedure and general cleaning procedures your Insinger dishwasher will give you years of trouble free service.

B.1 Operation Instructions

- B.1.1 Adjust the guide rails for proper clearance for the largest tray being run through the traydryer. The largest tray should have no more than 1/4" clearance on either side.

IMPORTANT: Failure to properly adjust the tray guides may result in jamming of the machine and possible tray damage.

- B.1.2 Move the power toggle switch to the "ON" position. The amber "ON" pilot light will illuminate.
- B.1.3 To begin operation depress the START button. The conveyor and blower will start.
- B.1.4 Follow the operating procedures for the traywasher.
- B.1.5 To stop the operation depress the STOP button and move the power toggle switch to the "OFF" position.
- B.1.6 Refer to the cleaning procedures for proper clean-up of the dishmachine.
- B.1.7 Report any unusual occurrences to qualified service personnel.

The following cleaning procedures should be done daily, at the end of the shift.

B.2 Cleaning Procedures, Daily

- B.2.1 Remove all internal removable parts.
- B.2.2 Remove any debris from the interior of the machine.
- B.2.3 Clean the interior of the machine with a damp cloth.

Do not hose down the machine



PART 3
MAINTENANCE and REPAIR
PROCEDURES

TD 321-3
MAINTENANCE and REPAIR PROCEDURES
Section A

Following is a basic guide for traydryer preventive maintenance and the repair and replacement of common traydryer parts. Refer to the Basic Service Guide for troubleshooting tips.

A.1 MAINTENANCE

A.1.1 Daily - Refer to the operation and cleaning instructions provided in this manual for daily cleaning procedures.

A.1.2 Weekly

A.1.2.1 The entire machine should be wiped down using an industrial grade stainless steel cleaner.

A.1.2.2 Inspect the air filter for dirt. Remove excess dirt. Do not immerse the air filter in water. If in need of replacement, replace with Insinger P/N 1165-66.

A.1.2.3 Under the supervision of your detergent supplier the machine interior must be properly de-limed.

☞ The water quality in some areas requires de-liming to be done more frequently. Contact your detergent supplier for recommended de-liming frequency.

A.1.3 Quarterly

A.1.3.1 Inspect the conveyor belt for wear. Replace as necessary.

A.1.3.2 Replace the air filter with Insinger P/N 1165-66.

A.1.3.3 Inspect the blower flexible tubing. Replace where necessary.

A.1.4 Bi-annually

A.1.4.1 Grease motor bearings with a grease gun using 1-2 strokes of a medium Polyurea Grease such as Shell Dolium R.

IMPORTANT: Over greasing motor may cause premature machine failure.

A.1.3.5 Remove the side panel and clean the blower compartment of dust or debris.

A.2 MAINTENANCE PROCEDURES

IMPORTANT: ELECTRICAL POWER MUST BE TURNED-OFF BEFORE SERVICING EQUIPMENT.

A.2.1 Replacement of Conveyor belt

A.2.1.1 With power to the machine turned "OFF" locate the master link on the conveyor belt.

A.2.1.2 Loosen the 2 adjustment bolts located at the load end of the machine.

A.2.1.3 Remove the cotter pin from the master link. Remove the master link.

A.2.1.4 Pull the conveyor belt from the machine.

A.2.1.5 Install the new conveyor belt by reverse of the above.

A.2.1.6 If belt jams see the Basic Service Guide symptom #5.

TD 321-3
MAINTENANCE and REPAIR PROCEDURES
Section A

A.2.2 Replacement of Blower Flexible Tubing

- A.2.2.1 With power to the machine turned "OFF", remove the access panel located on the side of the machine.
- A.2.2.3 Locate the flexible tubing at the blower (refer to dwg. # 1361-97) and loosen the two hose clamps at each end of the flexible tubing.
- A.2.2.4 Remove the flexible tubing by pulling it off its fitting.
- A.2.2.5 Replace the flexible tubing by slipping it over its mating fitting. Secure it by tightening the hose clamps.
- A.2.2.6 Replace the access panel.

A.2.3 Blower Motor Lubrication

- A.2.3.1 With power to the machine turned "OFF", remove the access panel located on the side of the machine.
- A.2.3.2 Locate the grease fitting on the motor. Using 1 to 2 full strokes from a grease gun apply grease to the motor. Use a Medium Polyurea grease such as Shell Dolium R.

☞ Take CAUTION to NOT overgrease the motor.

TD 321-3
MAINTENANCE and REPAIR PROCEDURES
Section B

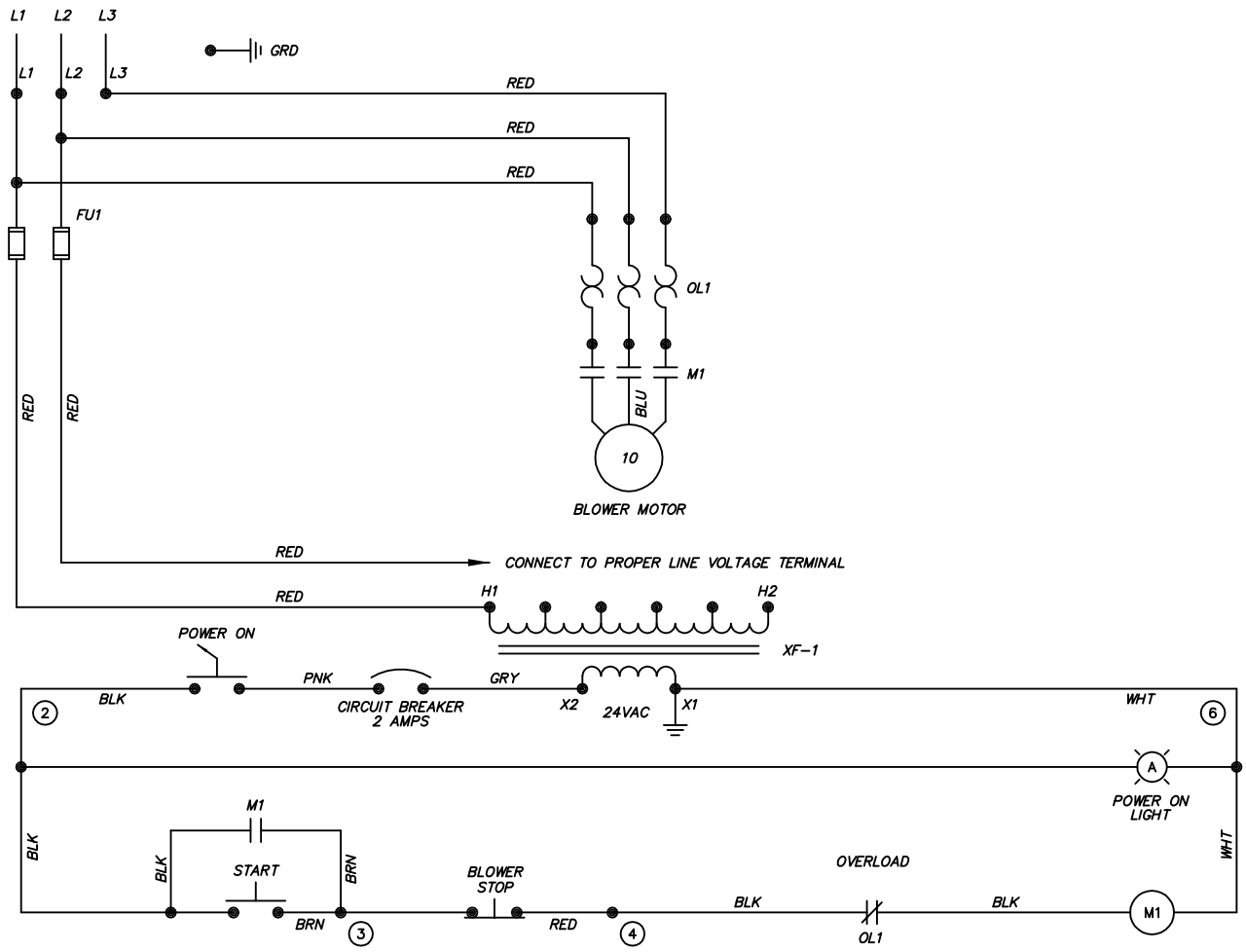
BASIC SERVICE GUIDE

SYMPTOM	POSSIBLE CAUSE	Solution
1. Conveyor does not operate	a. Motor overload(s) tripped	a. Check power supply b. Conveyor jammed c. Reset overload
2. Blower does not operate	a. Blower motor overload tripped b. Blower motor failure	a. Reset overload b. Replace blower motor
3. Trays jam	a. Obstruction in path	a. Remove obstruction
4. Trays not dry Please note: trays will NOT be completely dry	a. Blower not operating b. Flexible tubing ruptured c. Intake filter dirty	a. See symptom #2 b. Replace flexible tubing c. Replace filter
5. Belt sticks on sprockets	a. Belt tension too high	a. Loosen adjustment bolts



PART 4

**ELECTRICAL SCHEMATICS and
ELECTRICAL REPLACEMENT PARTS**

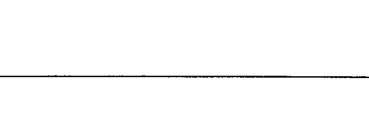
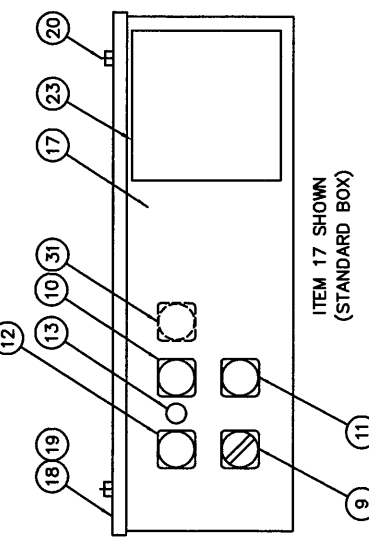
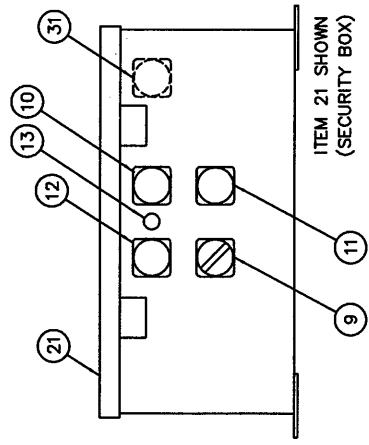
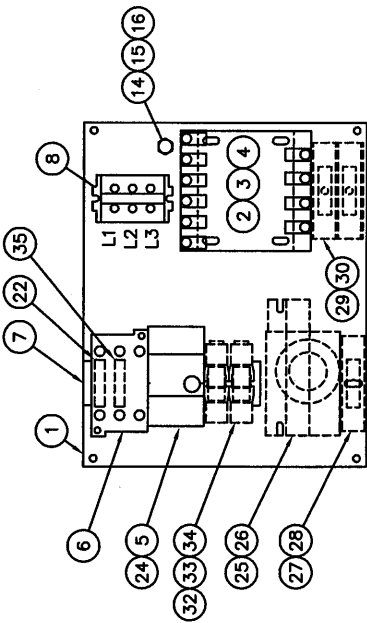


G	-	10.15.24	TITLE	TRAY DRYER	DWG. NO.	WTD001
F	1500	12.1.96		WIRING DIAGRAM		
E	1278	10.04.95				
REV	ECN NO	DATE			Philadelphia, PA 19135	DRWN/DATE
FILE:	WIRE\WTD001				(215) 624-4800	RAF
					FAX (215) 624-6966	

ITEM	DESCRIPTION	PART NO.	QTY
29	FUSE BLOCK, 2 POLE (250 VA XFMR)	DE9-185	1
30	FUSE (250 VA TRANSFORMER PRIMARY)	DE9-169	2
	460 V FNG-R-1.8	DE9-174	
	230 V FNG-R-3.5	DE9-175	
	208 V FNG-R-4	DE9-175	
31	PILOT LIGHT ASSY - RED	DE8-61	1
32	RELAY BASE	DE2-37	2
33	RELAY	DE2-38	2
34	RELAY HOLD DOWN SPRING	DE3-43	2
35	AUXILIARY CONTACT, NC	DE1-61AE	1

ITEM	DESCRIPTION	PART NO.	QTY
22	AUXILIARY CONTACT, NO	DE1-62AE	AR
23	NAME PLATE	SK-2114D	1
24	OVERLOAD BASE	DE2-60	1
FOLLOWING USED WITH STAND ALONE TRAY DRYER:			
25	DC DRIVE CONTROL	2M510	4
26	POTENTIOMETER BRACKET	1094-115	1
27	FUSE BLOCK, 1 POLE (DC MOTOR)	DE9-42	1
28	FUSE (DC MOTOR)	FNG-R-2.25	1
29	TRANSFORMER (DRY, 250 VA, NOT SHOWN)	DE6-26	1

ITEM	DESCRIPTION	PART NO.	QTY
1	COMPONENT MOUNTING PLATE	SK-3772	1
	STANDARD (14 3/4 x 9 1/8)		
	SECURITY PACKAGE (10 3/4 x 8 7/8)	DE9-215	1
2	TRANSFORMER (50 VA, 24 VAC)	DE6-8	1
3	FUSE BLOCK KIT (50 VA XFMR)	DE9-163	1
4	FUSE (50 VA TRANSFORMER PRIMARY)	DE9-196	2
	460 V FNG-R-.5	DE9-196	
	380 V FNG-R-.5	DE9-196	
	220 - 230 V FNG-R-.75	DE9-166	
	208 V FNG-R-.75	DE9-166	
5	OVERLOAD RELAY	DE2-58	1
	460/3/60	DE2-57	
	380/3/50	DE2-62	
	230/3/60	DE2-61	
	220/3/50	DE2-62	
	208/3/60	DE2-62	
6	CONTACTOR	DE1-93	1
	460/3/60	DE1-56AE	
	380/3/50	DE1-55AE	
	230/3/60	DE1-55AE	
	220/3/50	DE1-55AE	
	208/3/60	DE1-55AE	
7	DIN RAIL (35 mm)	DE9-84	1
8	TERMINAL BLOCK ASSY	DE3-3	1
9	SELECTOR SWITCH ASSY	DE8-58	1
10	PUSHBUTTON ASSY, START	DE8-64	1
11	PUSHBUTTON ASSY, STOP	DE8-65	1
12	PILOT LIGHT ASSY - YELLOW	DE8-62	1
13	CIRCUIT BREAKER (2A)	DE9-31	1
14	GROUNDING STUD, 1/4-20	D309C-GC-4G	1
15	LOCKWASHER, 1/4	D313C-G5	1
16	HEX NUT, 1/4-20	D312C-GC-2	1
17	CONTROL BOX	1361-45	1
18	CONTROL BOX COVER	1361-46	1
19	GASKET	9007-001	1
20	NUT	D312C-EF-5	4
21	CONTROL BOX	SK-3808	1



TITLE TD-321 TRAY DRYER CONTROL PANEL LAYOUT

Philadelphia, PA 19135 DRWN/DATE
(215) 624-4800 MFJ
FAX (215) 624-6966

Insinger FILE: SKETCH\SK-3069 SCALE 1=4 DWG. NO. SK-3069

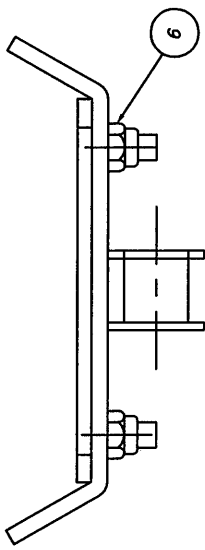
N	2024	12.104	10.1.95
M	1986	8.1.03	
L	1872	4.9.01	

REV ECN NO DATE

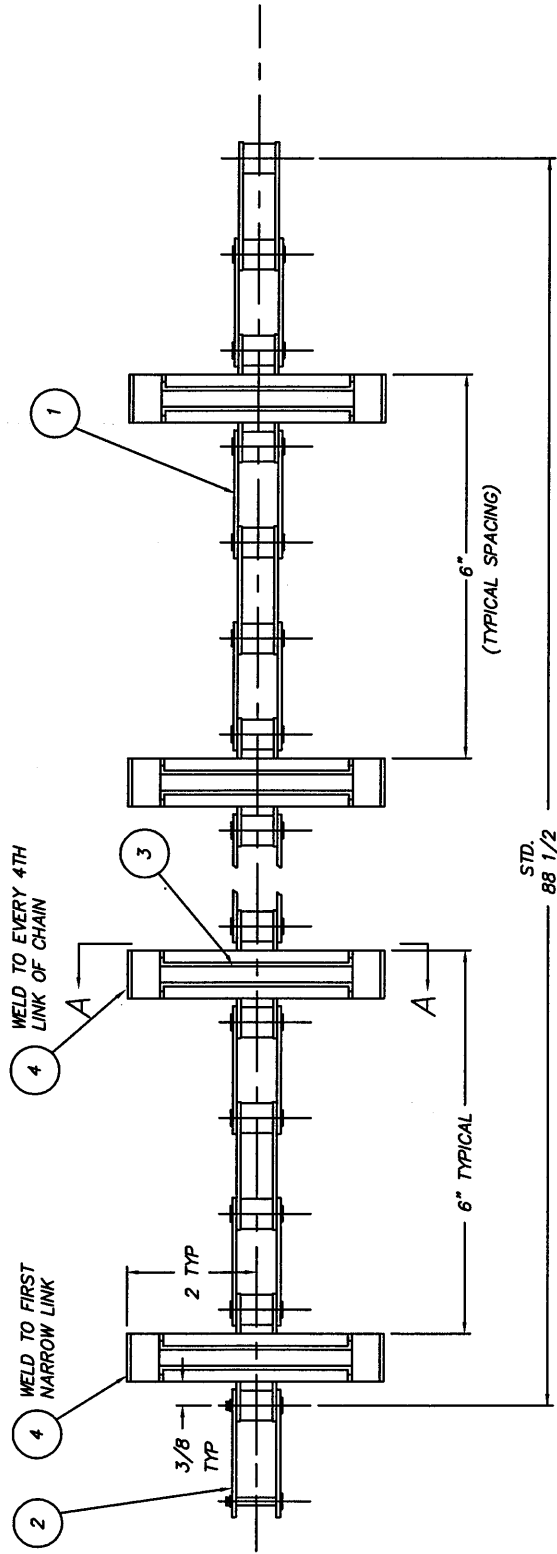


PART 5
REPLACEMENT PARTS

ITEM	PART NO.	DESCRIPTION	STD	60"
1	D308C-1 1/2	CHAIN	1	1
2	D308C-1 1/2 CL	CONNECTING LINK	1	1
3	1361-241	CROWN & RETAINER ASSY	15	19
4	1361-130	CRADLE	15	19
5	-	-	-	-
6	D312C-EF-5	LOCKNUT #10-32	30	38



SECTION A-A
(FULL SCALE)



STD.
88 1/2
(59 LINKS)
KRISPY KREME DONUTS
60" LONG TANK
75 LINKS - 112 1/2"

NOTE:
USE WELDING FIXTURE MADE OF PARTS SK-4613, '14 & '15
CRADLES (ITEM #4) ARE WELDED TO NARROW LINKS ONLY.

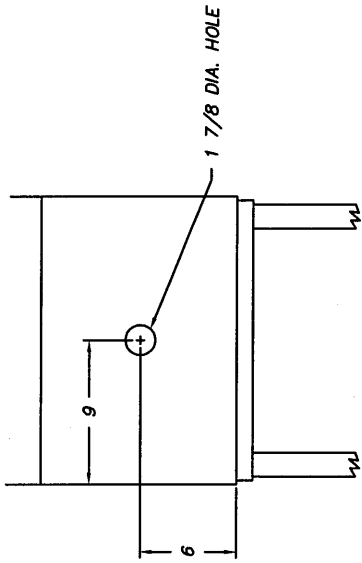
TOLERANCES		TITLE		NEXT ASSY DWG. NO.	
D	2412	FRACTIONS ±1/64	CHAIN ASSY	REQD	1361-102
C	1966	DECIMALS	INDIVIDUAL DRIVE	SCALE	1
B	1938	XX ± .005	MAT'L	USED ON	TD 321-3
A	788	XX ± .01	AS NOTED	1=2	
REV	ECN NO	DATE	UNLESS OTHERWISE SPECIFIED	DRWN/DATE	
FILE:	PARTS\1361-102			PG	6.25.92



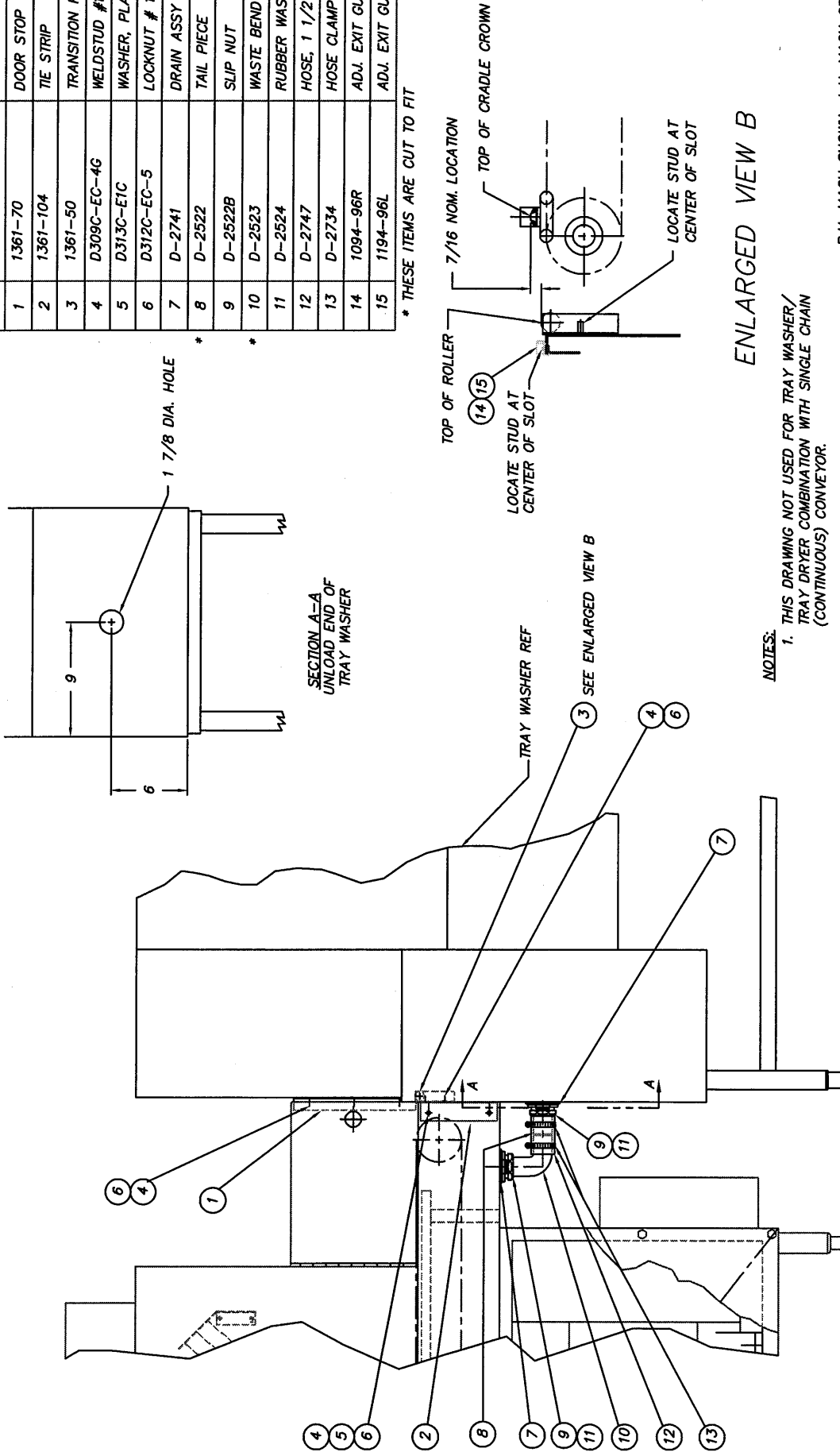
Philadelphia, PA 19135
(215) 624-4800
FAX (215) 624-6966

ITEM	PART NO.	DESCRIPTION	QTY.
1	1361-70	DOOR STOP	2
2	1361-104	TIE STRIP	2
3	1361-50	TRANSITION ROLLER ASSY	1
4	D309C-EC-4G	WELDSTUD #10-32 X 1/2	18
5	D313C-ETC	WASHER, PLAIN # 10	8
6	D312C-EC-5	LOCKNUT # 10-32	18
7	D-2741	DRAIN ASSY	2
8	D-2522	TAIL PIECE	1
9	D-2522B	SLIP NUT	2
10	D-2523	WASTE BEND	1
11	D-2524	RUBBER WASHER	2
12	D-2747	HOSE, 1 1/2 ID X 3 LG.	1
13	D-2734	HOSE CLAMP	2
14	1094-96R	ADJ. EXIT GUIDE	1
15	1194-96L	ADJ. EXIT GUIDE	1

* THESE ITEMS ARE CUT TO FIT



SECTION A-A
UNLOAD END OF
TRAY WASHER



ENLARGED VIEW B

NOTES:

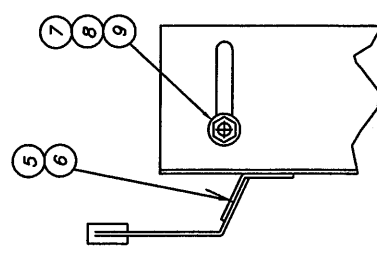
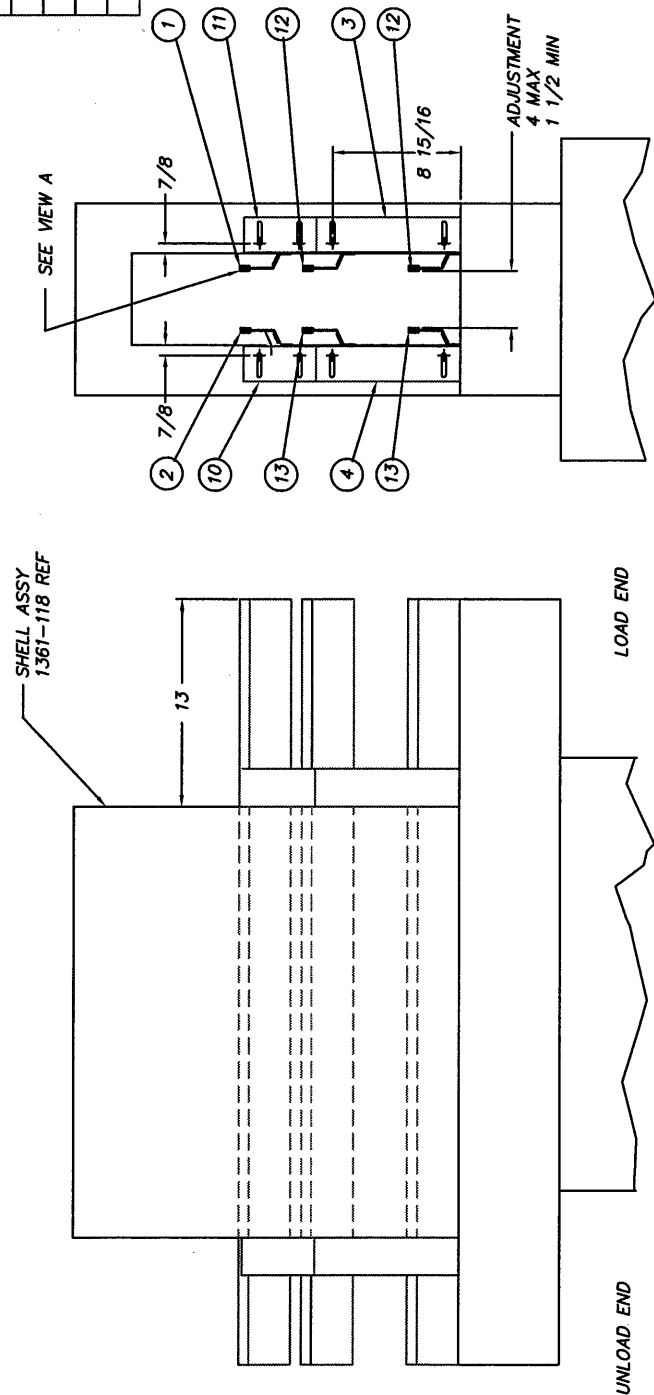
- THIS DRAWING NOT USED FOR TRAY WASHER/
TRAY DRYER COMBINATION WITH SINGLE CHAIN
(CONTINUOUS) CONVEYOR.

R.H. MACH SHOWN L.H. MACH OPPOSITE

TOLERANCES	TITLE	NEXT ASSY	DWG. NO.
FRACTIONS ±1/64	HOOK-UP KIT	1361-1	1361-105
DECIMALS .XXX ± .005	MATL. AS NOTED	SCALE 1:8	USED ON 7D321-3
.XX ± .01	INSINGER	PA 19135	DRWN/DATE
ANGULAR ±1/2	Machine Company	(215) 624-4800	PG 6.26.92
UNLESS OTHERWISE SPECIFIED		FAX (215) 624-6966	

- △ ECN# 840 3.17.93
- △ ECN# 800 1.13.93
- △ ECN# 788 12.15.92
- △ ECN# 688 7.29.92

ITEM	PART NO.	DESCRIPTION	QTY.
1	1361-90R	GUIDE RAIL ASSY	1
2	1361-90L	GUIDE RAIL ASSY	1
3	1361-78R	ADJ. GUIDE RAIL BRACKET	2
4	1361-78L	ADJ. GUIDE RAIL BRACKET	2
5	D309C-DC-3G	WELDSTUD #8-32 X 3/8	12
6	D312C-DC-5	LOCKNUT #8	12
7	D309C-EF-4G	WELDSTUD #10-32 X 1/2	16
8	D313C-E1	WASHER PLAIN # 10	16
9	D312C-EF-5	LOCKNUT #10-32	16
10	1361-76L	ADJ. GUIDE RAIL BRACKET	2
11	1361-76R	ADJ. GUIDE RAIL BRACKET	2
12	1361-128R	GUIDE RAIL ASSY	2
13	1361-128L	GUIDE RAIL ASSY	2



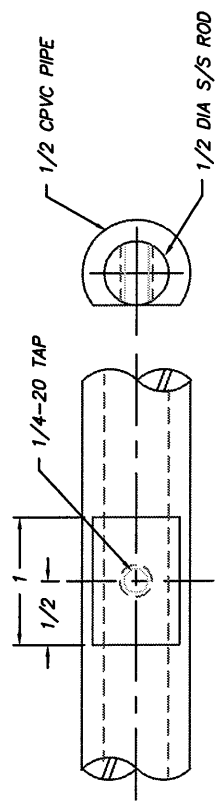
TYPICAL BOTH ENDS

ECN NO. 788 12.12.92
 ECN NO. 726 9.24.92
 ECN NO. 688 7.29.92
 FILE: PARTS\1361-108

NOTE:
 GUIDE RAILS TO ALIGN WITH GUIDE
 RAILS IN TRAY WASHER

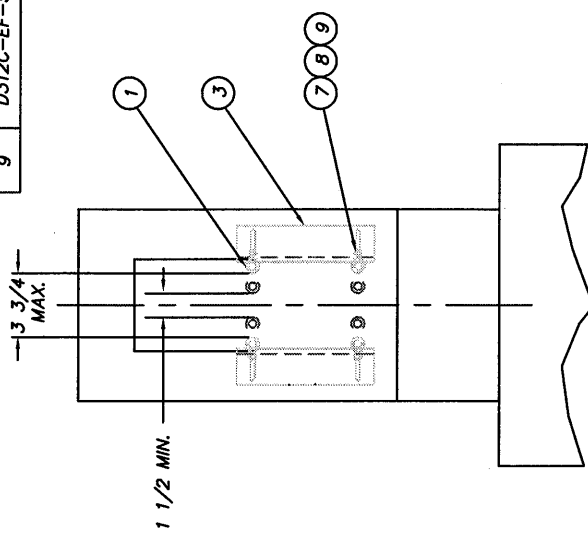
TOLERANCES	FRACIONS ±1/64	DECIMALS	.XX ± .005	.XX ± .01	ANGULAR ±1/2	UNLESS OTHERWISE SPECIFIED
TITLE	GUIDE RAIL INSTALLATION	3" EXTRA HIGH	MATL.	AS NOTED	SCALE	1:8
REG.	1	1361-108	USED ON	7D321-3	DRWN/DATE	PG 6.29.92
R.H. MACH SHOWN L.H. MACH OPPOSITE Philadelp ^a PA 19135 Machine Company (215) 624-8800 FAX (215) 624-6966						

ITEM	PART NO.	DESCRIPTION	QTY.
1	1098-168	GUIDE RAIL ASSY	4
2	-	-	-
3	1361-151	ADJ. GUIDE RAIL BRACKET	4
4	-	-	-
5	-	-	-
6	-	-	-
7	D309C-EF-4G	WELDSTUD #10-32 X 1/2	4
8	D313C-E1	WASHER PLAIN # 10	8
9	D312C-EF-5	LOCKNUT #10-32	8

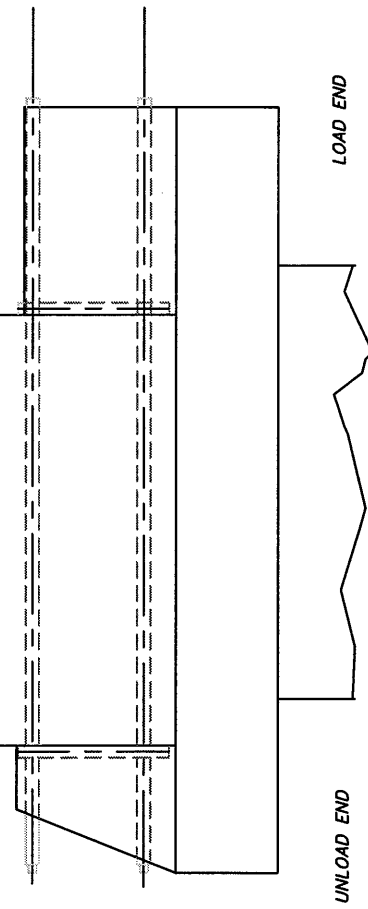


TYPICAL AT GUIDE ATTACHMENT

SHELL ASSY
1361-2 REF



TYPICAL BOTH ENDS



NOTE:
GUIDE RAILS TO ALIGN WITH GUIDE
RAILS IN TRAY WASHER.

R.H. MACH SHOWN L.H. MACH OPPOSITE

TOLERANCES	FRACCTIONS ±1/64
	DECIMALS
	.XXX ± .005
	.XX ± .01
	ANGULAR ±1/2
	UNLESS OTHERWISE SPECIFIED

TITLE	GUIDE RAIL INSTALLATION
MAT'L	AS NOTED
SCALE	1:8
USED ON	TD321-3
REQ.	1
NEXT ASSY	1361-1
DWG. NO.	1361-98

ECN# 1207 6.13.95
FILE: PARTS\1361-98

Philadelphia, PA 19135
(215) 624-8800
INSINGER FAX (215) 624-8966
PG 6.16.92

HOURS OF OPERATION

Insinger is available to assist you and your team day or night. Our regular business hours are Monday through Friday, 8:00 AM - 5:00 PM (EST). After-hours inquiries may take longer to respond.

CONTACTS

SALES

Kim Croft
Director of Business Development
E: kcroft@insingermachine.com
D: (215) 624-4800 x124
C: (630) 400-3656

David Baysinger
Regional Sales Manager
E: dbaysinger@insingermachine.com
D: (215) 624-4800 x111

ORDERS & QUOTES

Edward Gerhard
Account Manager
E: egerhard@insingermachine.com
D: (215) 624-4800 x116

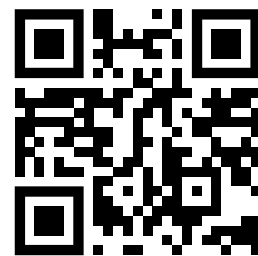
Deniece Heard
Customer Service
E: dheard@insingermachine.com
D: (215) 624-4800 x120

MARKETING

Matthew Weisbecker
Strategic Marketing Manager
E: mweisbecker@insingermachine.com
D: (215) 624-4800 x131

SERVICE & SUPPORT

Jason Striker
Parts & Service Manager
E: jason@insingermachine.com
D: (215) 624-4800 x139



Digital Contact Cards

