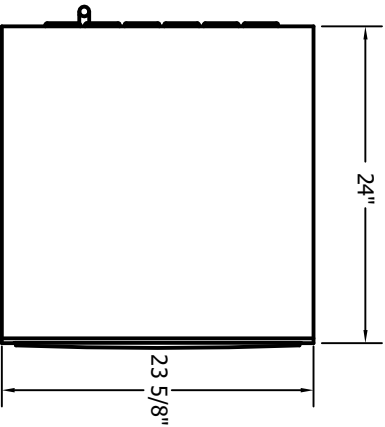
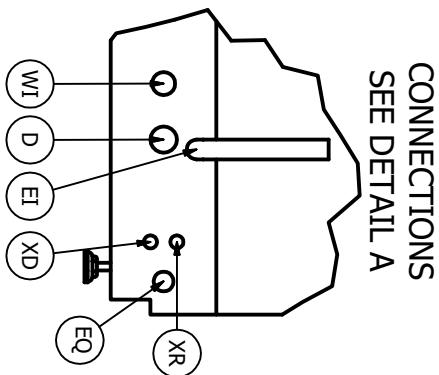


TOP - OPEN

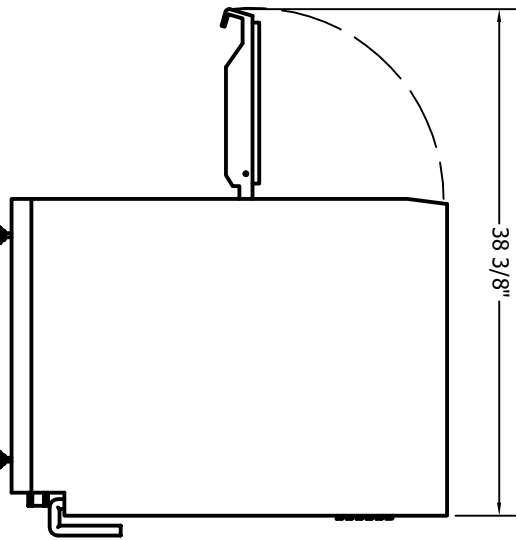


TOP - CLOSED

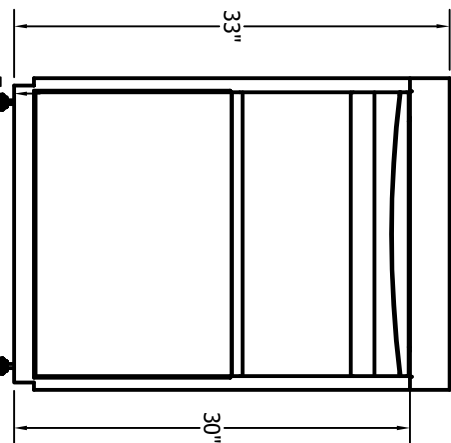


CONNECTIONS
SEE DETAIL A

LEGEND	
WI	WATER INLET
D	DRAIN
EI	ELECTRICAL INLET
XD	DETERGENT
EQ	GROUND
XR	RINSE

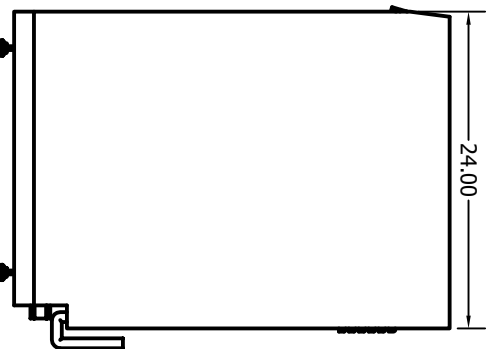


SIDE - OPEN



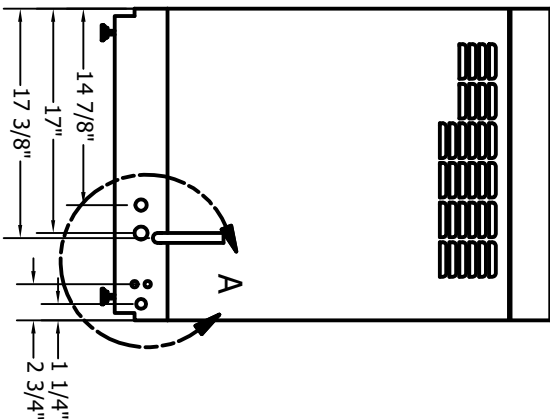
FRONT - CLOSED

ADJUSTABLE
FOOT HEIGHT



SIDE - CLOSED

BACK - CLOSED



MODEL:
CDT-1

insinger

INSINGER MACHINE CO.
6646 STATE ROAD
PHILADELPHIA, PA 19135

DESCRIPTION:
CODE: HIGH TEMPERATURE UNDERCOUNTER DISHWASHER

REV:
A

DRAWN BY: DATE: 01/24/25
AH: 1:10
DWG NUMBER: 1000-09982
REVISION DATE: 01/24/25

PHONE: (215) 624-4800

PLEASE CONTACT FACTORY FOR TECHNICAL QUESTIONS OR TO VERIFY CURRENT SPECIFICATIONS

UNLESS OTHERWISE SPECIFIED DIMENSIONS ARE IN INCHES
TOLERANCES
.XX .XXX FRACTIONS ANGLES
±.02 ±.005 ±1/32 ±1/2
THE INFORMATION ON THIS DRAWING IS THE PROPERTY OF INSINGER MACHINE CO. AND IS NOT TO BE DISCLOSED TO ANY THIRD PARTY WITHOUT THE WRITTEN CONSENT OF INSINGER MACHINE CO. FOR ANY PURPOSE. THIS INFORMATION IS FOR USE IN THE MANUFACTURING OF SIMILAR OR IDENTICAL PART COMPONENT OR SYSTEM. ANY VIOLATION OF THE PROPRIETARY RIGHTS OF INSINGER MACHINE CO. WILL BE PROSECUTED TO THE FULL EXTENT OF THE LAW. INSINGER MACHINE CO. IS NOT RESPONSIBLE TO APPROPRIATE LEGAL ACTION.