



Project _____

Item _____ Quantity _____

Approved by _____ Date _____

AIA/SIS # _____



STANDARD FEATURES

- 2 HP motor
- Durable 8" rotor
- Ideal for the handling of general waste in a small-medium foodservice operations (3 HP option recommended for larger operations)
- Designed primarily for the vegetable and salad preparation areas or pot and pan washing sink
- Rugged cast metal construction

SERIES N ROTOR

8" Commercial Food Waste Disposer

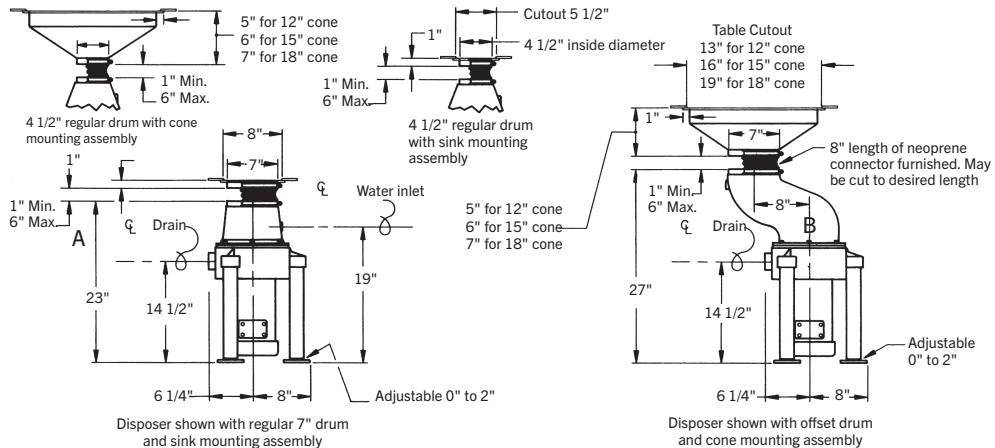


OPTIONS & ACCESSORIES

- 1.5 HP motor (light duty)
- 3 HP motor (heavy duty)
- 5 HP motor (heavy duty)
- Cones 12", 15", 18"
- Offset-body for maximum space utilization, also available for both cone & sink attachments
- Stainless steel cone or sink attachment (includes vinyl silver trap ring, solenoid valve, flow control valve, vacuum breaker)
- Support leg

SPECIFIER STATEMENT

Specified unit will be an Insinger Series N food waste disposer. Features include an 8" rotor, rugged, durable construction with no floor support required, designed for general waste handling in small restaurants and vegetable prep areas of medium to large kitchens. Includes a 1-year parts and labor warranty.



ELECTRICAL

Motor Size	THREE PHASE		SINGLE PHASE		THREE PHASE		SINGLE PHASE	
	Voltage (60 Hz)	Load	Voltage (50 Hz)	Load	Voltage (60 Hz)	Load	Voltage (50 Hz)	Load
1.5 HP	208 V	4.4 A	208 V	4.8 A	115 V	16 A	110 V	15 A
	230 V	4.2 A	N/A		230 V	8 A	220 V	7.5 A
	460 V	2.1 A	415 V	2.4 A	N/A		N/A	
2 HP	208 V	6 A	208 V	6.3 A	115 V	17.6 A	110 V	19 A
	230 V	5.8 A	N/A		230 V	8.8 A	220 V	9.5 A
	460 V	2.9 A	415 V	3.3 A	N/A			
3 HP	208 V	9.9 A	208 V	10.4 A				
	230 V	9 A	N/A					
	460 V	4.5 A	415 V	5.2 A				
5 HP	208 V	14.8 A	N/A					
	230 V	14 A						
	460 V	7 A						