



Project _____

Item _____ Quantity _____

Approved by _____ Date _____

AIA/SIS # _____



SW36

Pot & Pan Washer



36

Pans Per Rack

Military-Grade Build Quality

High-Velocity
Spray Nozzles



Made in the USA

STANDARD FEATURES

- **Designed for heavy duty applications**
- **Fully automatic operation**
- **Waterproof LED digital gauges**
- Automatic fill and drain
- Capillary thermometer for wash and final rinse
- Detergent connection provision
- Easily removable double filtration system
- External wash-down hose
- Four rotating wash arms with high velocity spray nozzles
- Inspection door
- Low water protection
- Maintenance free hub system
- Manifold clean-out brush
- Pressure regulator to maintain 20 psi rinse flow
- Simple scrap screen
- Single point electrical connection
- Stainless steel frame, legs and feet
- Stainless steel front panel
- Standard frame drip proof motors
- Vent opening with adjustable damper

OPTIONS & ACCESSORIES

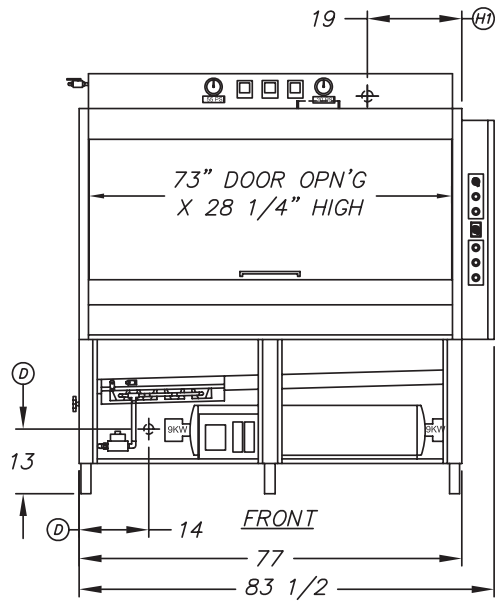
- Rack assortment: general utility, bake sheet, utensil basket
- Recommended option: power vent fan
- Security package
- Steam booster
- Totally enclosed motor
- Wash tank heat system: Electric
- Wash tank heat system: Gas
- Wash tank heat system: Steam Coil
- Wash tank heat system: Steam Injection

SPECIFIER STATEMENT

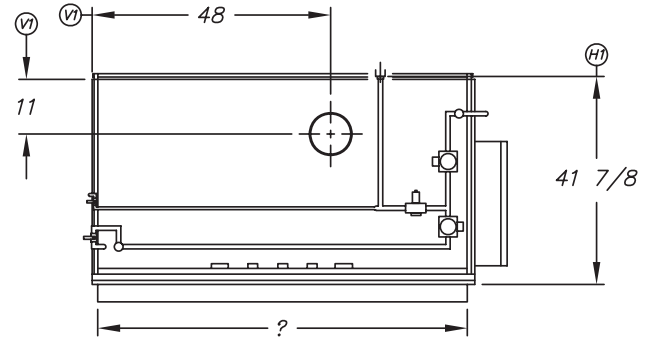
Specified unit will be an SW36 pot and pan washer. Features include automatic fill and drain, capillary thermometer for wash and final rinse, easily removable double filtration system, four rotating high-velocity wash arms, and waterproof LED digital gauges. Includes a 1-year parts and labor warranty.

TECHNICAL INFORMATION

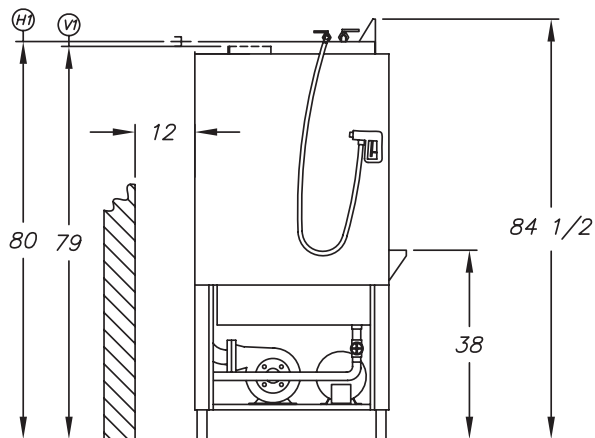
FRONT



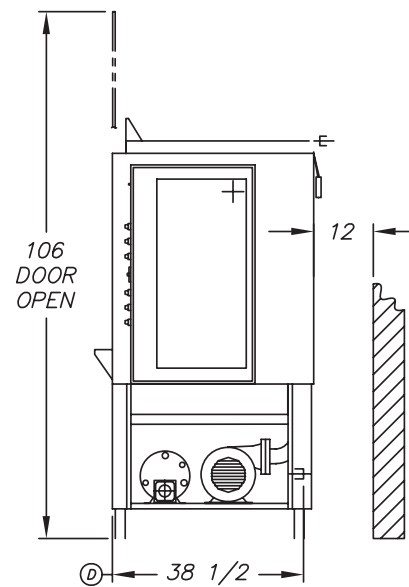
TOP



LEFT SIDE



RIGHT SIDE



SPECIFICATIONS

Capacity	Pans Per Rack	36
	Sheet Pans Per Hour	432
Heating & Venting	Wash Tank Heat	9 kW
	Rinse Booster Heat	9 kW
	Exhaust Hood Requirement	8" Steam Exhaust Vent
	Water Inlet Temperature	140°F
Water	Water Consumption (20 PSI)	126 gal/hr
	Wash Tank Capacity	40 gal
	Peak Drain Flow	12 gal/min
	Steam Tank Consumption (Injected, 10-15 PSI)	41 lbs/hr
Steam	Steam Tank Consumption (Coil, 10-15 PSI)	72 lbs/hr
	BTUH Capacity	90,000
Gas	Natural Gas Consumption (7" W.C. Minute)	88 CFH
	Propane Consumption (11" W.C. Minute)	36 CFH
	Wash Motor	15 HP
Other	Shipping Weight	1850 lbs

ELECTRICAL

	Service Options	SW36 (Electric)	SW36 (Gas)	SW36 (Steam)
Electrical Options	208/60/3	142 A	42.0 A	92.0 A
	230/60/3	128 A	38.0 A	83.2 A
	460/60/3	65.2 A	20.0 A	42.6 A

Contact Insinger Sales at 800-344-4802 for an installation drawing specific to your application.
 Note: Due to product improvement we reserve the right to change information and specifications without notice.