



Project _____

Item _____ Quantity _____

Approved by _____ Date _____

AIA/SIS # _____



SW48

Pot & Pan Washer

STANDARD FEATURES

- Automatic fill
- Designed for heavy duty applications
- Digital temperature controller for wash and rinse
- Pit or floor model
- Detergent connection provision
- Emergency cycle stop button
- Low water cut-off
- Pan washer clean-up hose and spray gun
- Pressure regulator to maintain 20 psi rinse flow
- Rinse pressure gauge
- Secondary system
- Single point electrical connection
- Three position cycle selector (Complete cycle times): Light (260 seconds), Medium (380 seconds), Heavy (500 seconds)
- Wash pump pressure gauge



48
Pans Per Rack

Military-Grade Build Quality

High-Velocity Spray Nozzles

Made in the USA

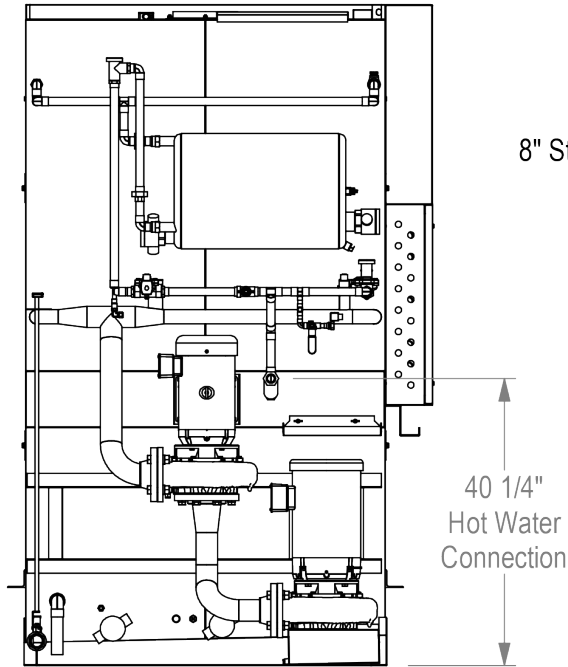
OPTIONS & ACCESSORIES

- Rack assortment: general utility, bake sheet, utensil basket
- Recommended option: power vent fan
- Security package
- Steam booster
- Totally enclosed motor
- Wash tank heat system: Electric
- Wash tank heat system: Gas
- Wash tank heat system: Steam Coil
- Wash tank heat system: Steam Injection

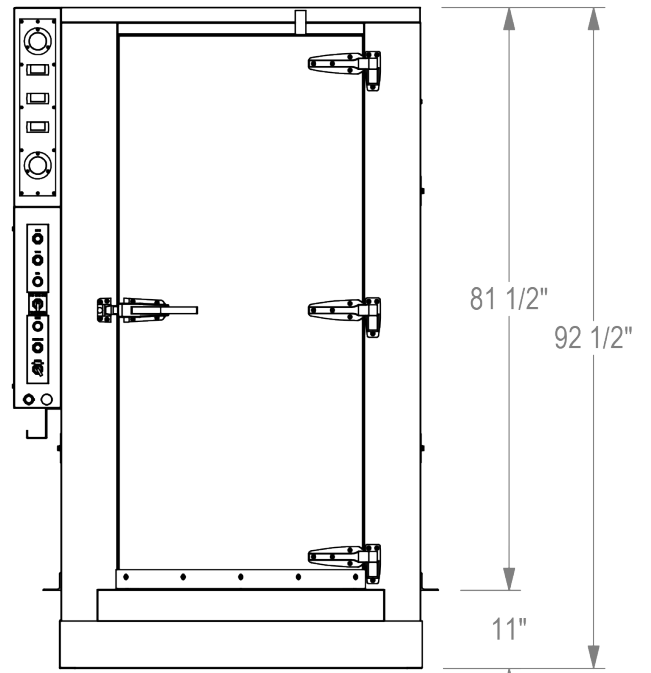
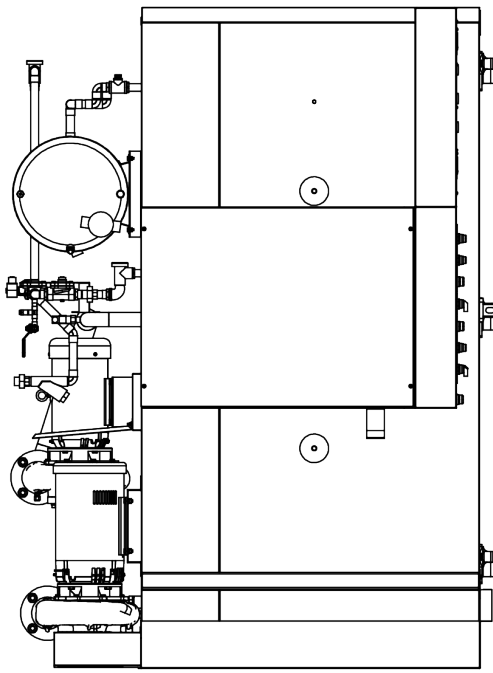
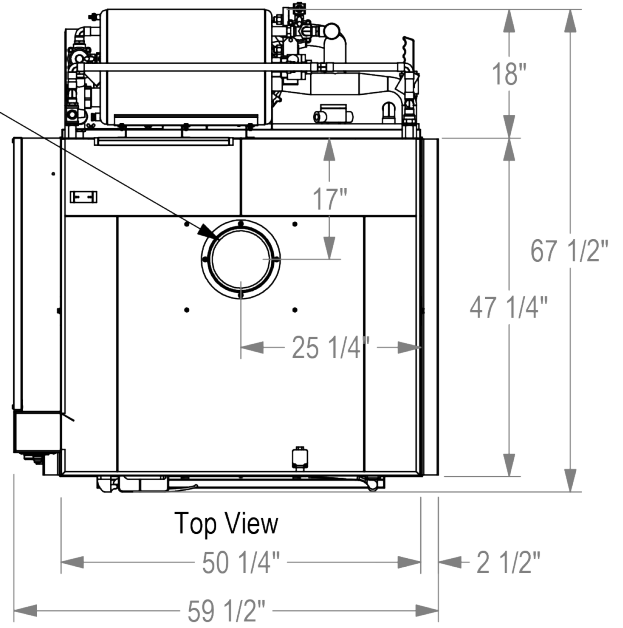
SPECIFIER STATEMENT

Specified unit will be a SW48 pot and pan washer. Features include automatic fill, digital temperature controller for wash and rinse, emergency cycle stop button, pan washer clean-up hose and spray gun, and a three-position wash selector with light, medium, and heavy cycles. Includes a 1-year parts and labor warranty.

TECHNICAL INFORMATION



8" Steam
Vent



SPECIFICATIONS

Capacity	Racks Per Hour	12
	Sheet Pans Per Hour	579
Heating & Venting	Wash Tank Heat	9 kW + 4.5 kW Element
	Rinse Booster Heat	(2) 9 kW
	Exhaust Hood Requirement	8" Steam Exhaust Vent
	Water Inlet Temperature	140°F
Water	Water Consumption (20 PSI)	168 gal/hr
	Water Recirculation (50-60 PSI)	240 gal/min
	Wash Tank Capacity	65 gal
	Peak Drain Flow	11 gal/min
Steam	Steam Tank Consumption (Injected, 10-15 PSI)	37 lbs/hr
	Steam Tank Consumption (Coil, 10-15 PSI)	76 lbs/hr
Gas	BTUH Capacity	66,000
	Natural Gas Consumption (7" W.C. Minute)	65 CFH
	Propane Consumption (11" W.C. Minute)	26 CFH
Other	Wash Motors - (1) 10 HP, (1) 5HP	15 HP
	Shipping Weight	2,440 lbs

ELECTRICAL

	Service Options	SW48 (Electric)	SW48 (Gas)	SW48 (Steam)
Electrical Options	208/60/3	142 A	42.1 A	92.1 A
	230/60/3	128 A	38.2 A	83.4 A
	460/60/3	65.4 A	20.2 A	42.8 A

Contact Insinger Sales at 800-344-4802 for an installation drawing specific to your application.
 Note: Due to product improvement we reserve the right to change information and specifications without notice.