



Project \_\_\_\_\_

Item \_\_\_\_\_ Quantity \_\_\_\_\_

Approved by \_\_\_\_\_ Date \_\_\_\_\_

AIA/SIS # \_\_\_\_\_



# SW78

Pot & Pan Washer



**78**  
Pans Per Rack

Military-Grade Build Quality

High-Velocity Spray Nozzles

Made in the USA

## STANDARD FEATURES

- Automatic fill
- Designed for heavy duty applications
- Digital temperature controller for wash and rinse
- Pit or floor model
- Cycle start button
- Detergent connection provision
- Door safety switch
- Emergency cycle stop button
- Low water cut-off
- Pan washer clean-up hose and spray gun
- Power on/off switch with amber indicator
- Pressure regulator
- Pressure regulator to maintain 20 psi rinse flow
- Single point electrical connection
- Three position cycle selector (Complete cycle times): Light (260 seconds), Medium (380 seconds), Heavy (500 seconds)

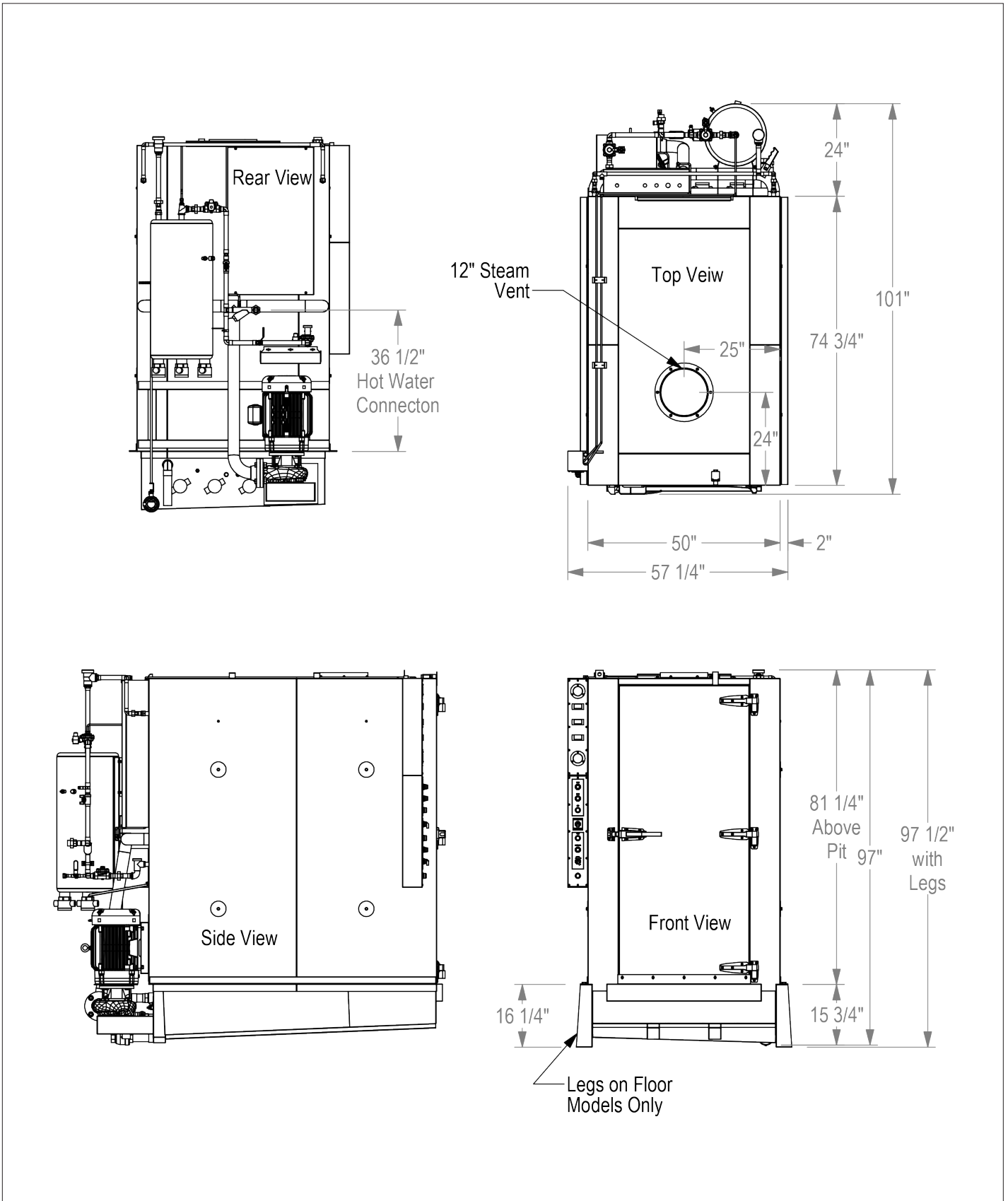
## OPTIONS & ACCESSORIES

- Rack assortment: general utility, bake sheet, utensil basket
- Recommended option: power vent fan
- Security package
- Steam booster
- Totally enclosed motor
- Wash tank heat system: Electric
- Wash tank heat system: Gas
- Wash tank heat system: Steam Coil
- Wash tank heat system: Steam Injection

## SPECIFIER STATEMENT

Specified unit will be a SW78 pot and pan washer. Features include automatic fill, digital temperature controller for wash and rinse, emergency cycle stop button, pan washer clean-up hose and spray gun, and a three-position wash selector with light, medium, and heavy cycles. Includes a 1-year parts and labor warranty.

# TECHNICAL INFORMATION



## SPECIFICATIONS

Capacity	Pans Per Rack	78
	Sheet Pans Per Hour	936
Heating & Venting	Wash Tank Heat	9 kW (3)
	Rinse Booster Heat	9 kW (3)
	Exhaust Hood Requirement	12" Steam Exhaust Vent
	Water Inlet Temperature	140°F
Water	Water Consumption (20 PSI)	311 gal/hr
	Water Recirculation (50-60 PSI)	280 gal/min
	Wash Tank Capacity	160 gal
	Peak Drain Flow	16 gal/min
Steam	Steam Tank Consumption (Injected, 10-15 PSI)	125 lbs/hr
	Steam Tank Consumption (Coil, 10-15 PSI)	125 lbs/hr
Gas	BTUH Capacity	190,000
	Natural Gas Consumption (7" W.C. Minute)	186 CFH
	Propane Consumption (11" W.C. Minute)	78 CFH
Other	Wash Motor HP	25
	Shipping Weight	2500 lbs

## ELECTRICAL

	Service Options	SW78 (Electric)	SW78 (Gas)	SW78 (Steam)
Electrical Options	208/60/3	216 A	66.0 A	144 A
	230/60/3	195 A	59.0 A	129 A
	460/60/3	98.1 A	30.3 A	64.4 A

Contact Insinger Sales at 800-344-4802 for an installation drawing specific to your application.  
 Note: Due to product improvement we reserve the right to change information and specifications without notice.