

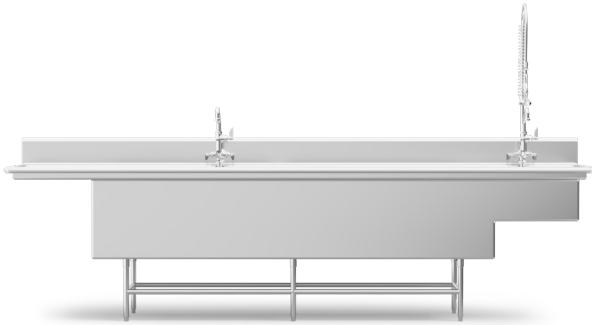


Project _____

Item _____ Quantity _____

Approved by _____ Date _____

AIA/SIS # _____



SMARTSCRUBBER 96

Automatic Sink System

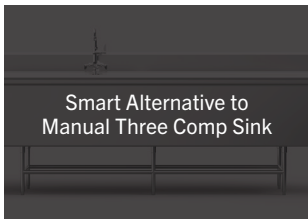


16

Gauge Stainless Steel



Three Standard Sizes



Smart Alternative to Manual Three Comp Sink



Made in the USA

SPECIFIER STATEMENT

Specified unit will be an Insinger SmartScrubber automatic scrub sink with Quadjet-style whirlpool system. Features include a 1 HP pump, non-submerged heat source, six high-velocity jets, high-capacity basket-style waste drain, and T304 stainless steel construction. Includes a 1-year parts and labor warranty.

STANDARD FEATURES

- 1 HP pump and non-submerged heat source
- 16-Gauge stainless steel with rolled front and hemmed sides
- Angled corners to eliminate jams
- Fits full-sized sheet pans
- Front-mounted controls (on/off for pump and heater)
- Quad-jet whirlpool wash system
- Six high-velocity jets for effective cleaning
- Smart alternative to manual three compartment sink
- 11" backsplash
- T304 stainless steel construction
- High-capacity basket-style waste drain
- Left or right hand configuration
- Runs on 120V, 20A circuit
- Single-point electrical connection
- Streamlined design
- Welded legs with stainless steel leveling feet

OPTIONS & ACCESSORIES

- Clean side undershelf
- End splash
- Sink overflows
- Scraper drainboard with pre-rinse faucet

SPECIFICATIONS

Shipping Weight (96")

495 lbs.

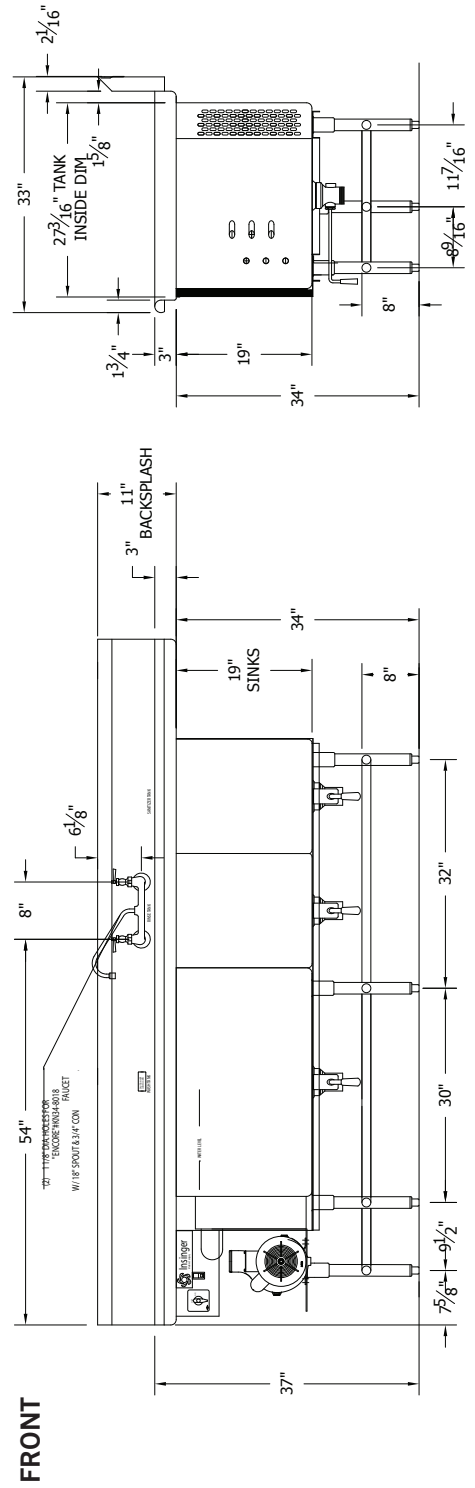
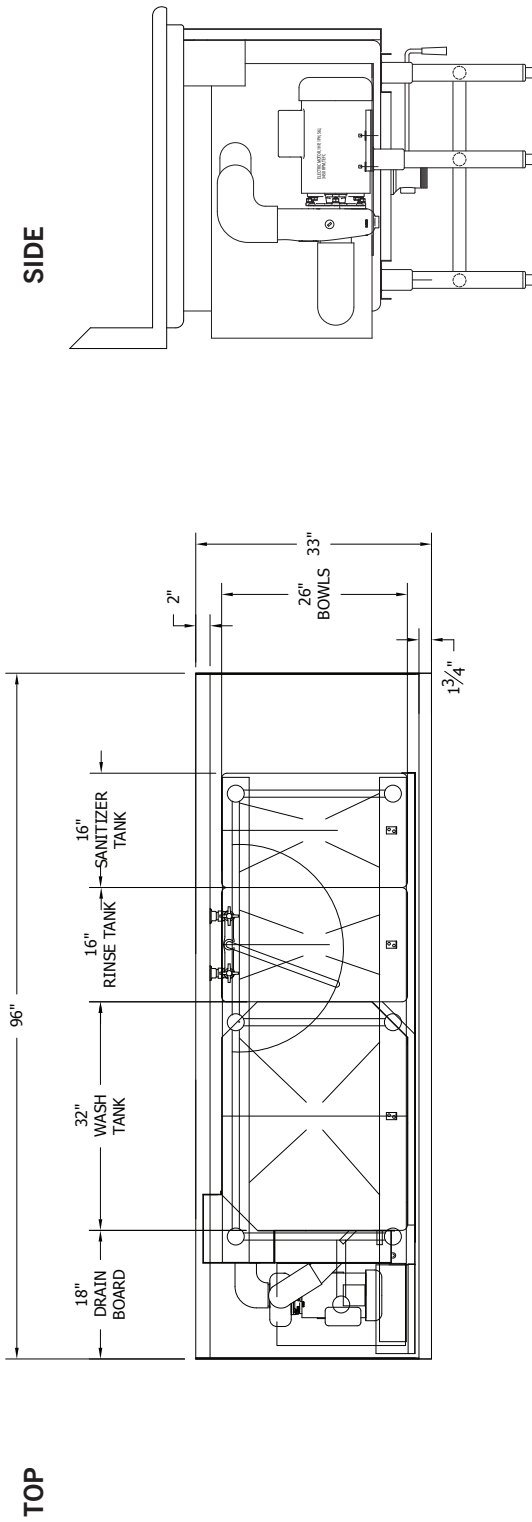
ELECTRICAL

120/60/1

16.3 A

TECHNICAL INFORMATION

SMARTSCRUBBER 96 - LEFT HAND



TECHNICAL INFORMATION

SMARTSCRUBBER 96 - RIGHT HAND

