



Project _____

Item _____ Quantity _____

Approved by _____ Date _____

AIA/SIS # _____



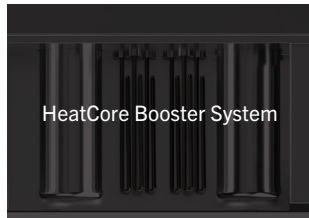
ADMIRAL 66

Single Tank Rack Conveyor Dishwasher with Pre-Wash



233

Racks Per Hour



HeatCore Booster System



CrossFire™ Wash System



ENERGY STAR® 3.0 Certified

SPECIFIER STATEMENT

Specified unit will be an Admiral 66 single tank rack conveyor dishwasher with recirculating pre-wash and wash systems with fresh water final rinse. Features include CrossFire™ wash system, dual built-in HeatCore boosters, ENERGY STAR® 3.0 certification, InfoPanel multi-line display, RackAware rack detection, StatusGlow LED Indicator Bar and ScrapShield oversized scrap screens. Includes a one (1) year parts & labor warranty.

STANDARD FEATURES

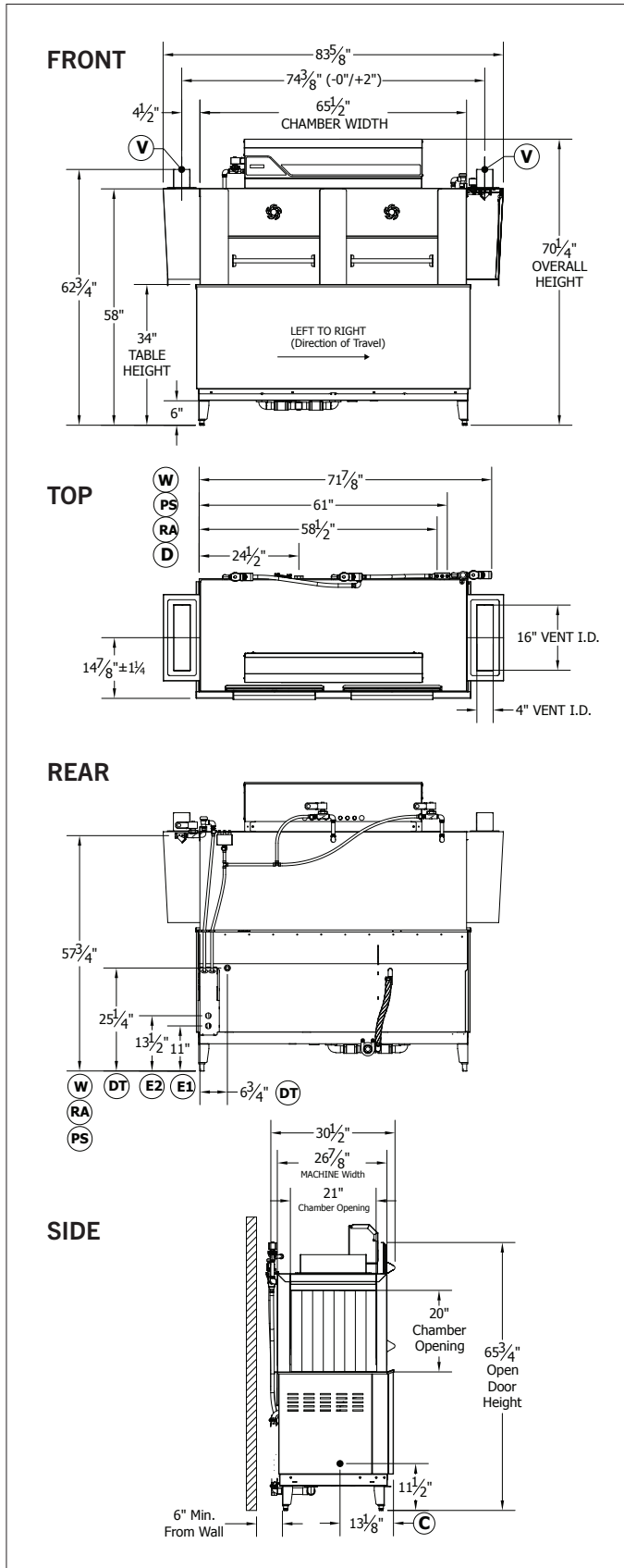
- Washes 233 racks (20" x 20") per hour
- ColorCorrect dish curtains
- CrossFire™ wash system
- Dual built-in HeatCore boosters
- ENERGY STAR® 3.0 certified
- InfoPanel multi-line display
- RackAware rack detection system
- ScrapShield oversized scrap screens
- StatusGlow LED indicator bar
- Automatic tank fill
- Detergent connection provision
- Door safety switches
- Dual point connection (Single point optional)
- Elevated top mounted control panel
- End caps secured to prevent loss
- Left or right hand configuration
- Low water protection
- Manifold clean-out brush
- Single press switch for delimiting
- Standard frame drip proof motors
- T304 stainless steel construction
- Ventilation fan connection provision
- VFD controlled continuous drive conveyor
- Wash tank heat recovery system

OPTIONS & ACCESSORIES

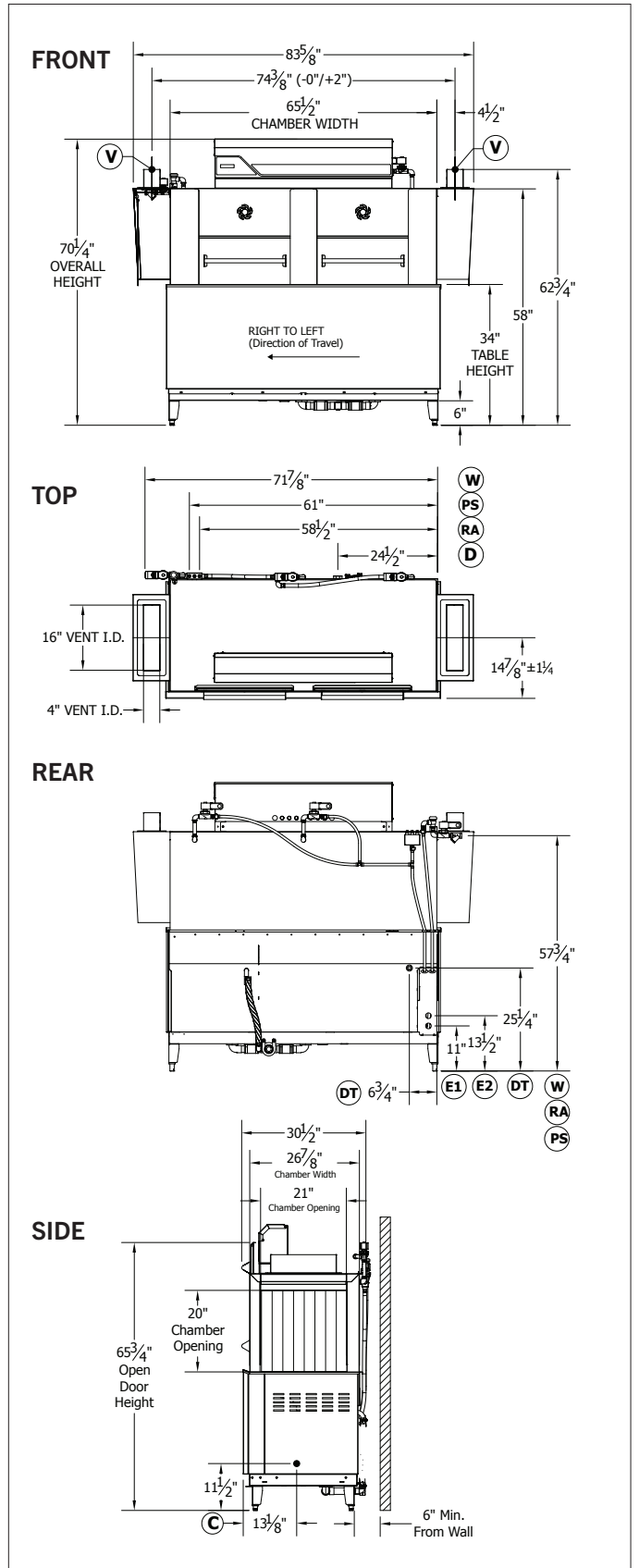
- 20" x 20" dish racks (peg or flat)
- Adjustable vent collars with damper controls
- Drain cooldown
- Left hand feed
- Power loader
- Power unloader
- Pressure reduction valve and wye strainer
- Rack limit switch
- Right hand feed
- Security package
- Single point connection (480V only)
- Vent cowl collar with adjustable damper controls

TECHNICAL INFORMATION

LEFT TO RIGHT



RIGHT TO LEFT



SPECIFICATIONS

| | | |
|-------------------|----------------------------|--------------|
| Capacity | Racks Per Hour | 233 |
| | Dishes Per Hour | 5,225 |
| | Meals Per Hour | 200-400 |
| Heating & Venting | Tank Heat | 18 kW |
| | Booster Heat | 29.4 kW |
| | Venting (Load End) | 350 CFM |
| | Venting (Unload End) | 350 CFM |
| Water | Water Inlet Temperature | 110°F |
| | Water Consumption (20 PSI) | .63 gal/rack |
| | Wash Tank Capacity | 33.75 gal |
| | Peak Drain Flow | 9.0 gal/min |
| Other | Drive Motor HP | 1/15 |
| | Wash Motor HP | 2.0 |
| | Built-In Boosters (2) | Standard |
| | Shipping Weight | 750 |

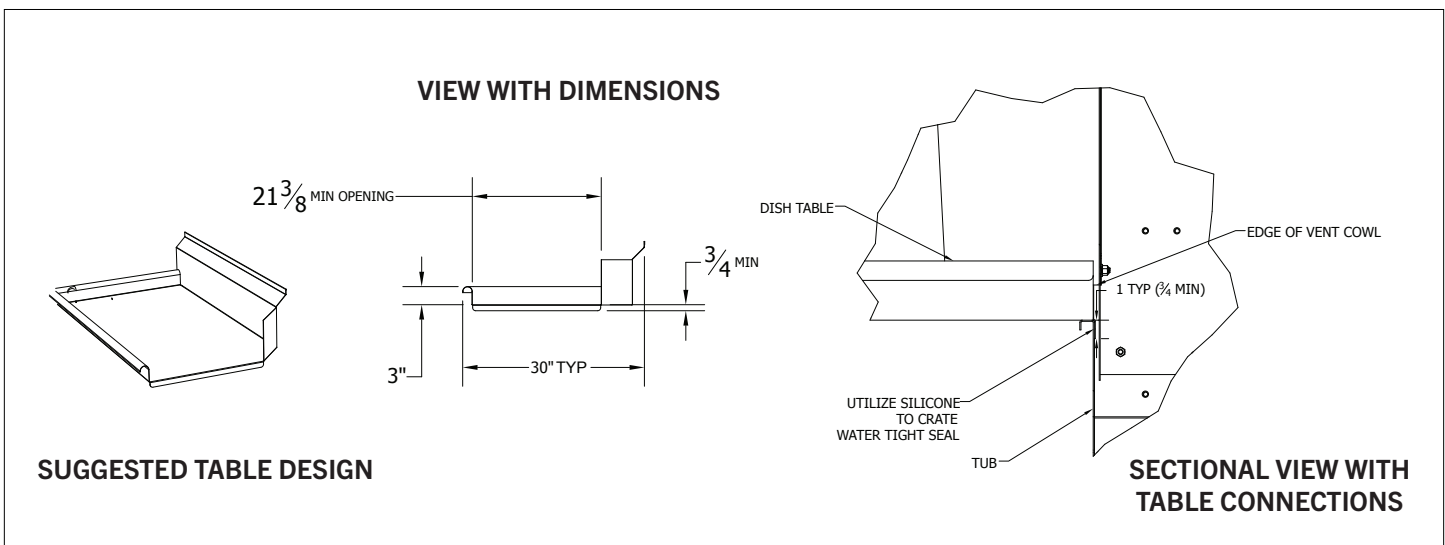
ELECTRICAL

| | Service Options | E1 | E2 |
|-----------------------------------|-----------------|------------|--------|
| Electric Tank Heat (Dual Point) | 208/60/3 | 56.5 A | 81.6 A |
| | 240/60/3 | 49.8 A | 70.7 A |
| | 480/60/3 | 25.0 A | 35.4 A |
| | Service Options | Total Load | |
| Electric Tank Heat (Single Point) | 480/60/3 | 61.5 A | |

LEGEND

| Type | Label | Description | Note |
|------------|-------|------------------------------------|------------|
| Water | D | Drain Connection | 1-1/2 FPT |
| | W | Hot Water Inlet (110 F Min) | 1/2 FPT |
| Electrical | E1 | Main Electrical (Single & 2-Point) | 1-3/8 HOLE |
| | E2 | Booster Electrical (2 Pt Only) | 1-3/8 HOLE |
| | C | Conductivity Probe Location | 7/8 HOLE |
| Chemical | DT | Detergent Insertion Points | 7/8 HOLE |
| | PS | Pressure Switch Connection | 1/4 FPT |
| | RA | Rinse Aid Connection | 1/4 FPT |
| Other | V | Vent Collar & Dampers (Optional) | 4" X 16" |

TABLE CONFIGURATION



Contact Insinger Sales at 800-344-4802 for an installation drawing specific to your application.
 Note: Due to product improvement we reserve the right to change information and specifications without notice.