



Project _____

Item _____ Quantity _____

Approved by _____ Date _____

AIA/SIS # _____



CA-3

Pot & Pan Washer



25
Racks Per Hour

Military-Grade Build Quality

Hold-Down Rack System

Made in the USA

STANDARD FEATURES

- Washes 25 racks (24" x 28") racks per hour
- Built-in rollers allow racks to easily guide in and out
- Efficient pass-through design
- Hold-down rack system
- ScrapShield oversized scrap screens
- T304 stainless steel construction
- Automatic tank fill
- Capillary thermometers for wash and final rinse
- Detergent connection provisions
- Door safety switches
- Front inspection door
- Interchangeable upper and lower spray arms
- Low water protection
- Manual bypass selector switch (auto/manual wash)
- Manifold clean-out brush
- One (1) year parts & labor warranty
- Rack set: 1 general utility, 1 bake sheet, 1 basket
- Side-mounted control panel (NEMA 12)
- Stainless steel front cosmetic panel
- Standard frame drip-proof motor
- Vacuum breaker on all incoming water lines

OPTIONS & ACCESSORIES

- Corner configuration (CA-3C)
- Drain cooldown
- Electric booster
- Full-size sheet pan rack
- General utility rack
- Pressure regulating valve and line strainer
- Security package
- Stainless steel steam coil tank heat
- Steam booster
- Telescoping doors
- Totally enclosed motor
- Wire mesh basket rack

SPECIFIER STATEMENT

Specified unit will be a CA-3 pot and pan washer. Features include built-in rollers, hold-down rack system, ScrapShield oversized scrap screens, and T304 stainless steel construction. Includes a one (1) year parts & labor warranty.

TECHNICAL INFORMATION

TOP

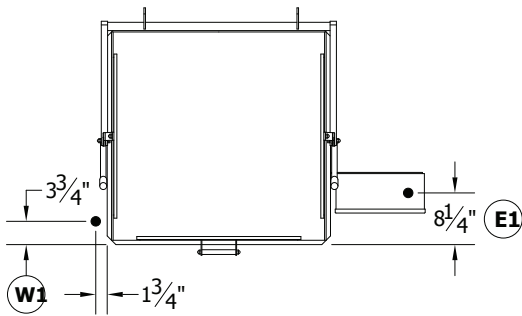
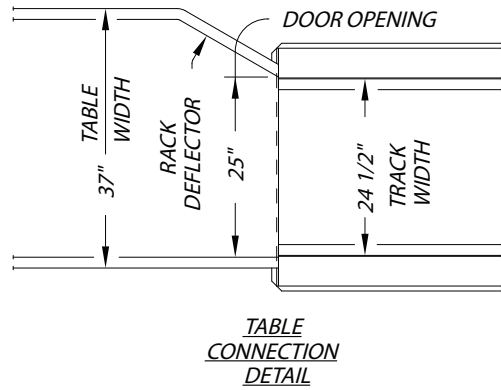
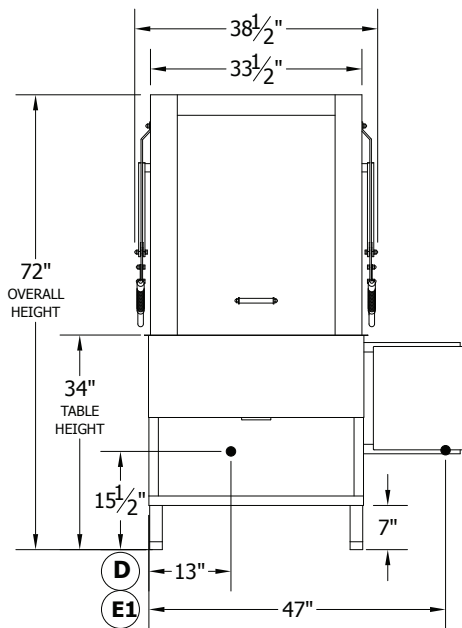


TABLE CONFIGURATION

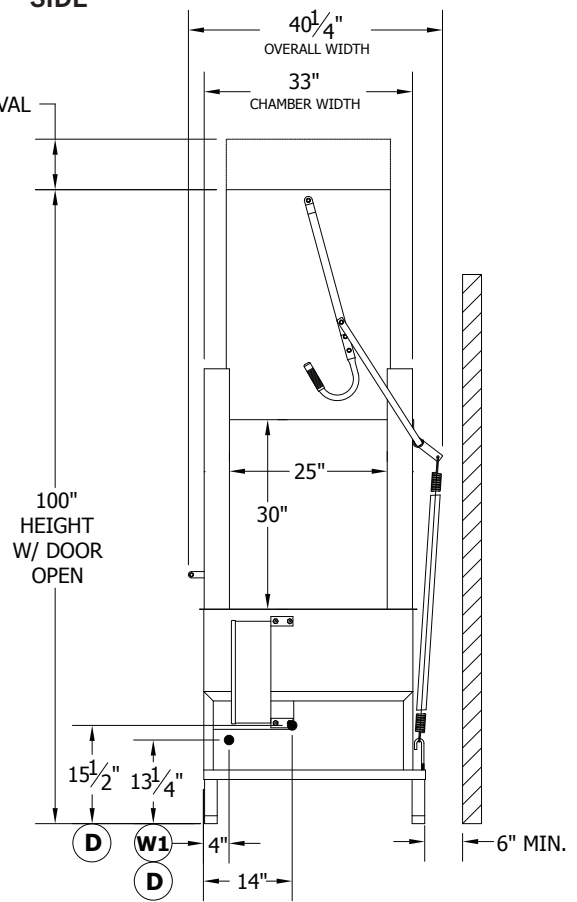


FRONT



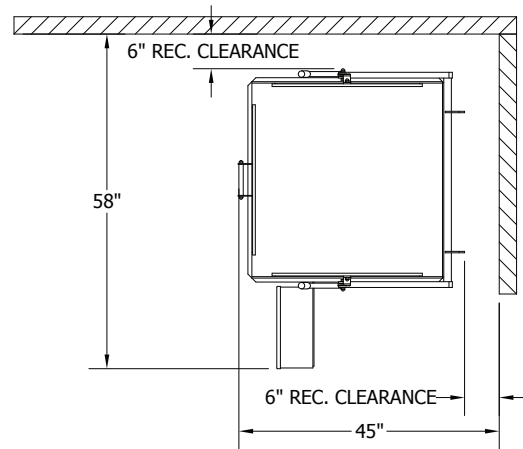
SIDE

ALLOW 8" FOR DOOR REMOVAL

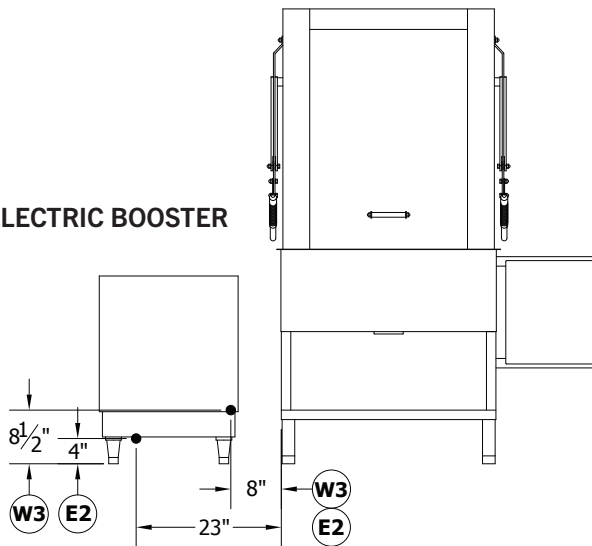


TECHNICAL INFORMATION

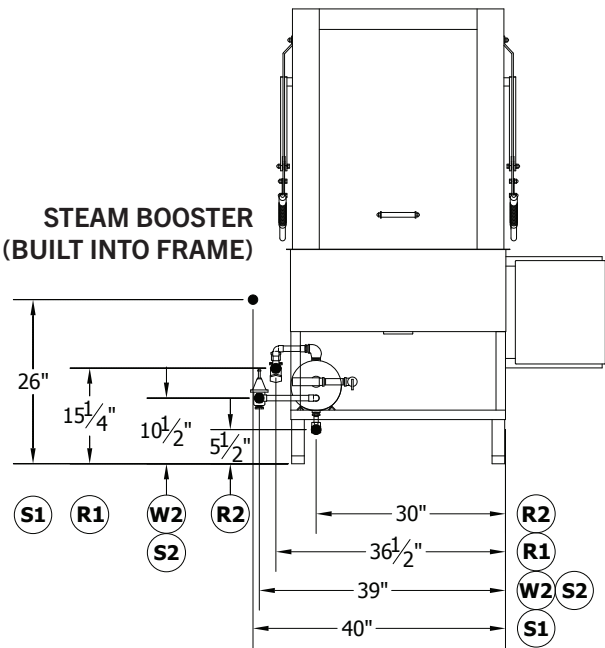
CORNER CONFIGURATION



ELECTRIC BOOSTER



STEAM BOOSTER (BUILT INTO FRAME)



SPECIFICATIONS

Capacity	Racks Per Hour (24" x 28")	25
	Sheet Pans Per Hour	150
Heating & Venting	Wash Tank Heat	5 kW
	Booster Heat (40°F Rise)	9 kW
	Booster Heat (70°F Rise)	24 kW
	Venting	300 CFM
	Water Inlet Temperature	110°F
Water	Water Consumption (20 PSI)	70 gal/hr
	Wash Tank Capacity	31 gal
	Peak Drain Flow	9 gal/min
	Steam Tank Consumption (20 PSI)	20 lbs/hr
Steam	Steam Consumption (20 PSI, 40°F Rise)	25 lbs/hr
	Steam Consumption (20 PSI, 70°F Rise)	44 lbs/hr
	Wash Motor	5 HP
Other	Shipping Weight	800

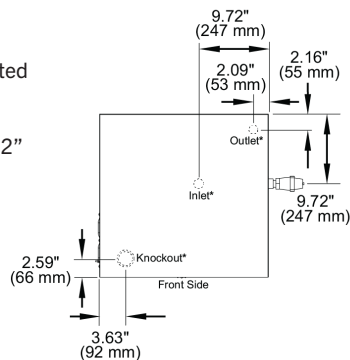
RECOMMENDED CIRCUIT SIZE

	CA-3 (Electric)	9 kW Booster	24 kW Booster
208/60/3	40 A	50 A	90 A
240/60/3	40 A	50 A	75 A
480/60/3	20 A	20 A	40 A

BOOSTER TOP VIEW

Knockouts, outlet, and inlet located on bottom of booster

Electrical knockouts at 1.5" and 2"



ELECTRICAL

	Service Options	CA-3 (Electric)	9 kW Booster	24 kW Booster
Electric Tank Heat	208/60/3	31.3 A	38 A	67.7 A
	240/60/3	27.9 A	33 A	57.8 A
	380/50/3	17.2 A	Contact Factory	
	480/60/3	13.9 A	16.3 A	29.9 A
	Service Options	CA-3 (Steam)		
Steam Tank Heat	208/60/3	17.4 A		
	240/60/3	15.9 A		
	380/50/3	9.6 A		
	480/60/3	7.9 A		

LEGEND

	Label	Description	Note
Water	W1	HOT WATER TO FINAL RINSE - 180F	1" FIPS
	W2	HOT WATER TO STEAM BOOSTER - 140F	1" FIPS
	W3	HOT WATER TO ELEC. BOOSTER - 140F	1" FIPS
	D	DRAIN CONNECTION	1.5 INCA
Electrical	E1	ELECTRICAL CONNECTION - MOTORS	5 HP
	E2	ELECTRICAL CONNECTION - BOOSTER	9 OR 24 kW
Steam	S1	STEAM TO TANK	3/4" FIPS
	S2	STEAM TO BOOSTER	1.25" FIPS
Other	R1	CONDENSATE RETURN - COIL ONLY	1/2" FIPS
	R2	CONDENSATE RETURN - BOOSTER	1/2" FIPS

Contact Insinger Sales at 800-344-4802 for an installation drawing specific to your application.
Note: Due to product improvement we reserve the right to change information and specifications without notice.