



Project _____

Item _____ Quantity _____

Approved by _____ Date _____

AIA/SIS # _____



DA-3

Pot & Pan Washer



50

Racks Per Hour

Military-Grade Build Quality

Hold-Down Rack System



Made in the USA

SPECIFIER STATEMENT

Specified unit will be an Insinger DA-3 pot and pan washer. Features include T304 stainless steel construction, hold-down rack system, rollers for easy rack swapping, automatic fill, and capillary thermometers for wash and final rinse. Includes a 1-year parts and labor warranty.

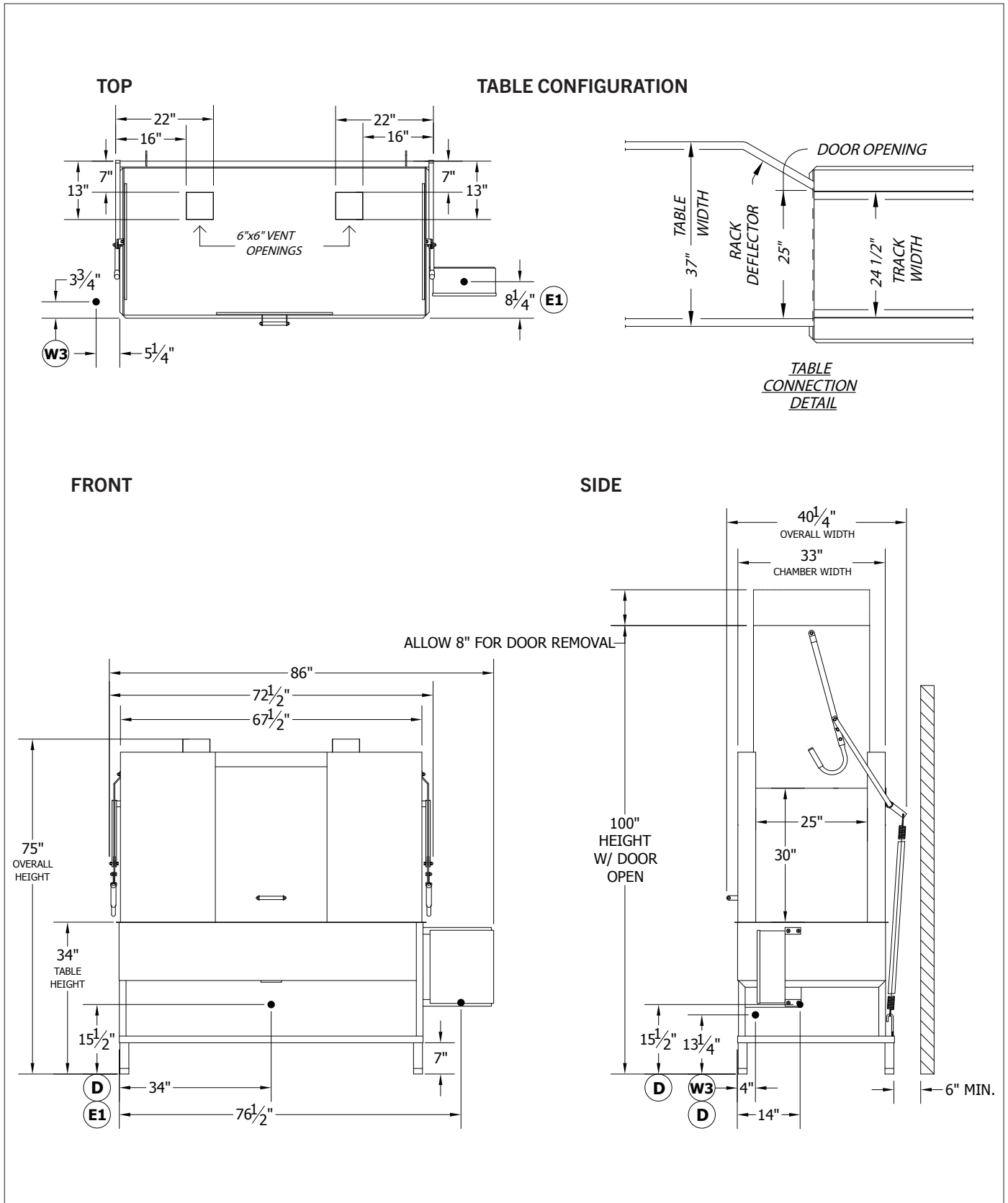
STANDARD FEATURES

- Washes 50 racks (24" x 28") per hour
- Built-in rollers allow racks to easily guide in and out
- Double the capacity of CA-3
- Efficient pass through design
- Hold-down rack system to secure ware
- T304 stainless steel construction
- Automatic tank fill
- Capillary thermometers for wash and final rinse
- Detergent connection provision
- Door safety switches
- Inspection door
- Interchangeable upper and lower spray arms
- Low water protection
- Manual bypass selector switch
- Manifold clean-out brush
- Rinse pressure regulation
- Racks: 2 general utility, 2 bake sheet, 1 basket
- Side-mounted control panel (NEMA 12)
- Simplified scrap screen design
- Stainless steel front panel
- Standard frame drip proof motor
- Two vent openings with adjustable dampers
- Vacuum breaker on all incoming water lines

OPTIONS & ACCESSORIES

- Drain cooldown system
- Electric boosters (Qty. 2) - remote
- Full-size sheet pan rack
- General utility rack
- Pressure reduction valve and line strainer
- Security package
- Stainless steel steam coil tank heat
- Steam boosters - built-in
- Telescoping doors
- Totally enclosed motor
- Wire mesh basket rack

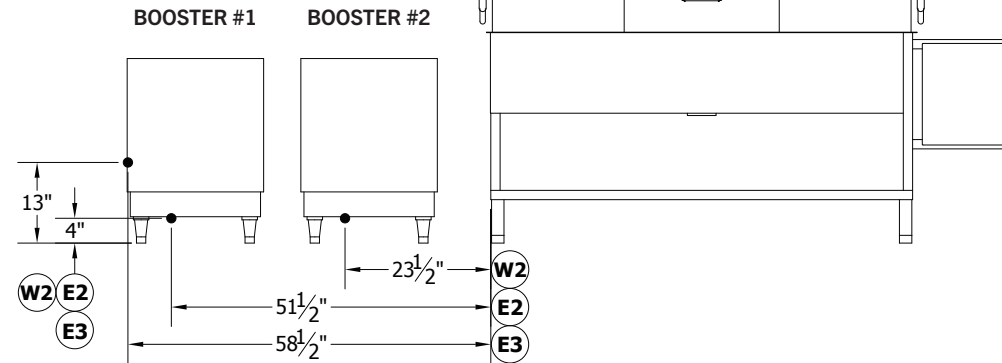
TECHNICAL INFORMATION



TECHNICAL INFORMATION

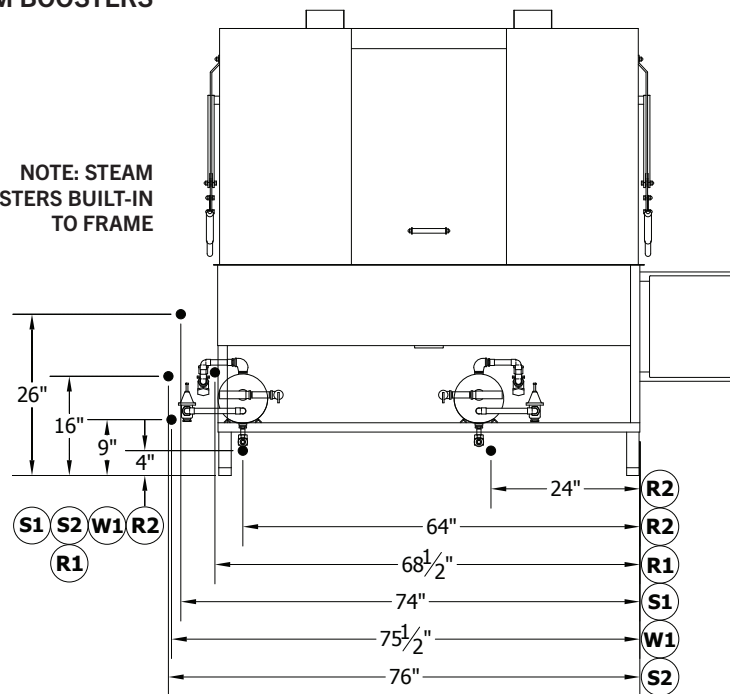
ELECTRIC BOOSTERS

NOTE: PLACE BOOSTERS BENEATH DISH TABLES



STEAM BOOSTERS

NOTE: STEAM BOOSTERS BUILT-IN TO FRAME



SPECIFICATIONS

| | | |
|-------------------|---------------------------------------|-------------------|
| Capacity | Racks Per Hour (24" x 28") | 50 |
| | Sheet Pans Per Hour | 300 |
| Heating & Venting | Wash Tank Heat | 5 kW |
| | Booster Heat (40°F Rise) | 9 kW (QTY. 2) |
| | Booster Heat (70°F Rise) | 24 kW (QTY. 2) |
| | Venting | 600 CFM |
| | Water Inlet Temperature | 110°F |
| Water | Water Consumption (20 PSI) | 140 gal/hr |
| | Wash Tank Capacity | 62 gal |
| | Peak Drain Flow | 16 gal/min |
| | Steam Tank Consumption (20 PSI) | 20 lbs/hr |
| Steam | Steam Consumption (20 PSI, 40°F Rise) | 50 lbs/hr |
| | Steam Consumption (20 PSI, 70°F Rise) | 88 lbs/hr |
| | Wash Motors | 10 (QTY. 2, 5 HP) |
| Other | Shipping Weight | 1,500 |

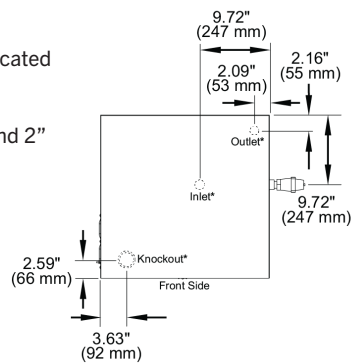
RECOMMENDED CIRCUIT SIZE

| | DA-3 (Electric) | Booster #1 (24 kW) | Booster #2 (24 kW) |
|----------|-----------------|--------------------|--------------------|
| 208/60/3 | 60 A | 90 A | 90 A |
| 240/60/3 | 60 A | 75 A | 75 A |
| 480/60/3 | 30 A | 40 A | 40 A |

BOOSTER TOP VIEW

Knockouts, outlet, and inlet located on bottom of boosters (qty. 2)

Electrical knockouts at 1.5" and 2"



ELECTRICAL

| | Service Options | DA-3 (Electric) | Booster (9 kW, QTY. 2) | Booster (24 kW, QTY. 2) |
|--------------------|-----------------|-----------------|------------------------|-------------------------|
| Electric Tank Heat | 208/60/3 | 48.0 A | 76 A | 135.4 A |
| | 240/60/3 | 43.1 A | 66 A | 115.6 A |
| | 380/50/3 | 26.4 A | Contact Factory | |
| | 480/60/3 | 21.5 A | 32.6 A | 59.8 A |
| | Service Options | DA-3 (Steam) | | |
| Steam Tank Heat | 208/60/3 | 34.1 A | | |
| | 240/60/3 | 31.1 A | | |
| | 380/50/3 | 18.8 A | | |
| | 480/60/3 | 15.5 A | | |

LEGEND

| Type | Label | Description | Note |
|------------|-------|--------------------------------------|------------|
| Water | W1 | HOT WATER TO FINAL RINSE - 180F | 1" FIPS |
| | W2 | HOT WATER TO STEAM BOOSTER - 140F | 1" FIPS |
| | W3 | HOT WATER TO ELECTRIC BOOSTER - 140F | 1" FIPS |
| Electrical | D | DRAIN CONNECTION | 1.5" FIPS |
| | E1 | ELECTRICAL CONNECTION - MOTORS | 5 HP |
| | E2 | ELECTRICAL CONNECTION - BOOSTER | 9 OR 24 kW |
| Steam | E3 | ELECTRICAL CONNECTION - BOOSTER | 9 OR 24 kW |
| | S1 | STEAM TO TANK | 3/4" FIPS |
| Other | S2 | STEAM TO BOOSTER | 1.25" FIPS |
| | R1 | CONDENSATE RETURN - COIL ONLY | 1/2" FIPS |
| | R2 | CONDENSATE RETURN - BOOSTER | 1/2" FIPS |

Contact Insinger Sales at 800-344-4802 for an installation drawing specific to your application.
 Note: Due to product improvement we reserve the right to change information and specifications without notice.